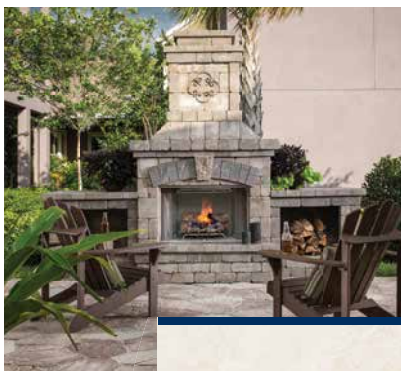


Outdoor Elements



2020



2021



nptpool.com



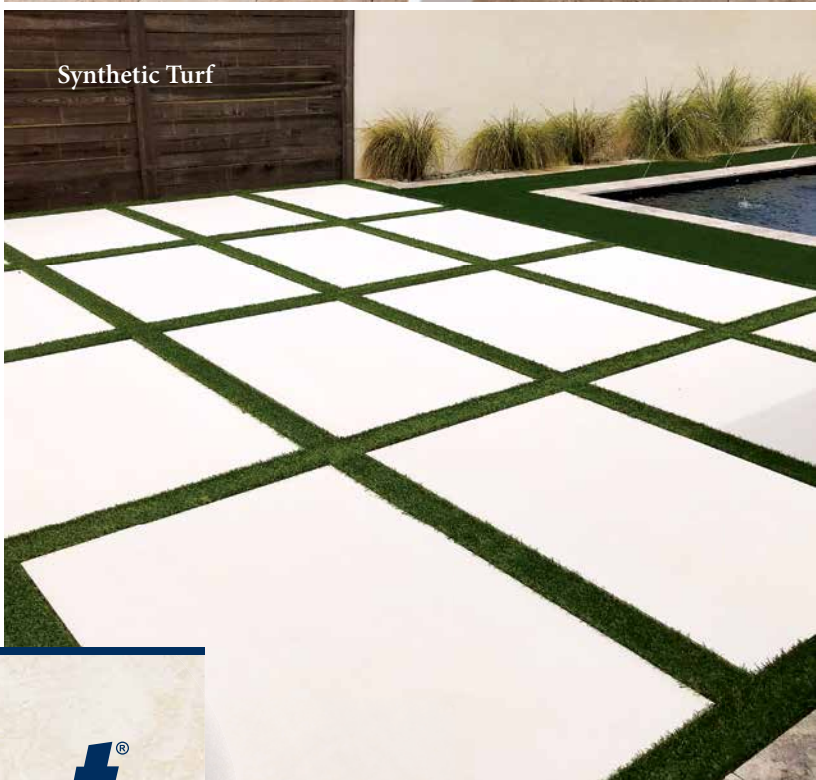
Outdoor Sound Systems



Outdoor Furniture



Grills



Synthetic Turf

Table of Contents

Outdoor Lighting 2-31

- **Unique Lighting**
 - Path Lights 4-5
 - Up Lights 6-7
 - Hardscape & Well Lights ... 8
 - Down Lights..... 9
- **Kichler Lighting**
 - Accent Lights 10
 - Path & Spread Lights 11
 - Patio & Deck Lights 12
 - Water Lights 13
 - Hardscapes Lights 14
 - LED Lamps 15
- **FX Luminaire**
 - Wall Lights 16-17
 - C-Line Series 18-19
 - Path Lights 20-21
 - Down Lights..... 22
 - Up Lights 23
 - Specialty Lights 24
 - Transformers 25
- **Vista Professional Outdoor Lighting**
 - Path Lights 26-27
 - Up Lights 28-29
 - Hardscapes Lights 30
 - Transformers 31

Fire & Water Features 32-45

- **The Outdoor Plus**
 - Fire & Water Bowls 34-37
 - Fire Pits..... 38
 - Torches 39
 - Scuppers 40
 - Pans & Burners 41
- **Fire Gear**
 - Sanctuary Collection 42
 - AnF Collection..... 43
- **Grand Effects**
 - Fire & Water Bowls 44
 - Scuppers 45

Fencing 46-51

- **Regis**
 - Residential Aluminum..... 48
 - Commercial Aluminum ... 49
 - Polyrail Fencing 50
 - Designer Fencing 51

Outdoor Grills & Kitchens 52-71

- **Bull BBQ**
 - Grill Heads 54-55
 - Pizza Oven 56-57
 - Grill Components 58-59
 - Grill Islands 60-63
- **Louisiana Grills**
 - Pellet Grills 64-67
- **Primo**
 - Ceramic Grills 68-69
 - Grill Tables 70
 - Accessories 71

Fireplaces & Fire Pits 72-77

- **Belgard**
 - Fireplaces 74-76
 - Fire Pits & Brick Ovens ... 77

Outdoor Accessories 78-91

- **Global Syn-Turf**
 - Synthetic Turf 80-81
- **TruAudio**
 - Outdoor Sound Systems ... 82-83
- **Infratech**
 - Outdoor Heaters 84-85
- **Ledge Lounger**
 - Outdoor Furniture 86-89
- **S.R.Smith**
 - In-Pool Furniture 90-91

DES 07.20 / M09.20

Follow us on:



To locate an
NPT Design Center
near you call
1.888.476.7665





Outdoor Lighting



Deck and Hardscape Lighting

Path Lights

Path Lights | Unique Lighting



Fission

Simple, yet elegant, the Fission offers soft level lighting. The frosted cylindrical lens minimizes glare while the FLEX GOLD™ Series T3 LED lamp provides sufficient light to cast soft glows on any path or walking area.



Solid
Brass

6
Finishes
Available



Canterbury

Elegant and stylish, the Canterbury features a fully articulating shroud allowing maximum design control.

Solid
Copper



Excalibur

The Excalibur features a bell shape shroud which tilts and rotates to illuminate walkways with high efficiency.

Solid
Brass

6
Finishes
Available

Path Lights



Neutron

Creates the perfect ambiance for intimate spaces like gardens and walkways.

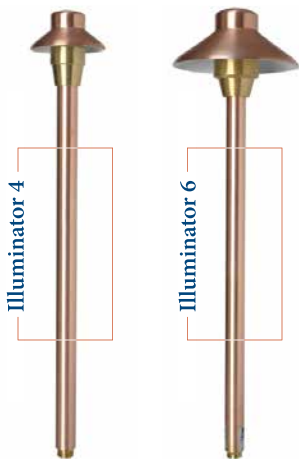
2
Finishes
Available



Proton

Features a white reflection panel under shroud for greater luminance.

2
Finishes
Available



Illuminator

Offers versatile light output and various beam spreads with its rotating adjustable height setting.

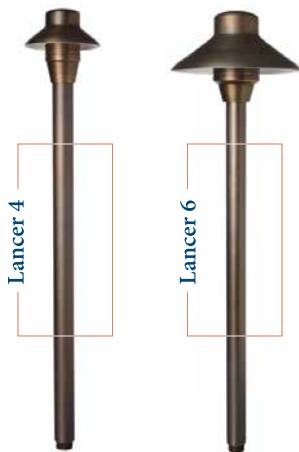
Solid
Copper



Cambridge

Illuminates any area with its modern design and soft level lighting.

Solid
Copper



Lancer

Creates elegant soft level lighting for pathways and planter areas.

Solid
Brass

6
Finishes
Available



Chancellor

Provides sufficient light for casting soft glows on any path or walkway.

Solid
Brass

6
Finishes
Available



Gamma Ray

The Gamma Ray® fixture is economically priced yet maintains Unique's high standards of quality.

A360
Alloy

2
Finishes
Available



Nucleus

The Nucleus® fixture is designed to illuminate shrubs, trees, signage, architectural facades and more.

A360
Alloy

2
Finishes
Available



Photon

The Photon® fixture is designed to illuminate shrubs, trees, signage, architectural facades and more.

A360
Alloy

2
Finishes
Available



Positron

One of the most resourceful fixtures in the Elements line, the Positron offers style and function without compromise.

Solid
Brass

6
Finishes
Available

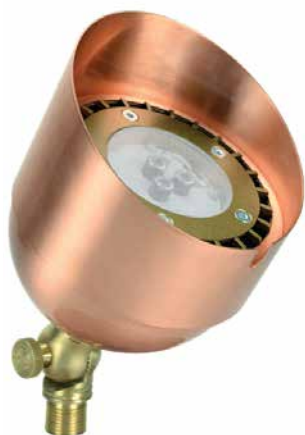


Transmittance

The Transmittance® fixture is designed to illuminate shrubs, trees, signage, architectural facades and more.

A360
Alloy

2
Finishes
Available



Oxford

A powerful and heavy duty directional up-light, the Oxford is perfect when illuminating trees, tall structures, and vast spaces.

Solid
Copper



Guardian

The Guardians sleek straight lines and dual gasket shroud feature make the Guardian an essential fixture.

Solid
Copper



Bishop

The Bishop can be used in numerous applications including silhouette, shadow or graze lighting.

Solid
Brass

6
Finishes
Available



Intrepid

One of the most resourceful fixtures in the Knights line, the Intrepid offers style and function.

Solid
Brass

6
Finishes
Available



Noble

A powerful yet compact uplight, the Noble was designed to perform with drop-in LEDs.

Solid
Brass

6
Finishes
Available



Valor

The Valor offers style and function without compromise.

Solid
Brass

6
Finishes
Available



Sovereign 5



Sovereign 8

Sovereign

The Sovereign is a step beyond the normally recessed step light. Perfect to illuminate stairs, benches, short retaining walls and other niche locations.

Solid
Brass

6
Finishes
Available



Gallant

Simple, discrete and versatile all describe the Gallant's design and function.

Solid
Copper



Iso

The Iso fixture is designed for hardscaping installations. It will beautifully illuminate a stone wall, an outdoor bar area or a deck.

2
Finishes
Available



Cardinal

Tough and resilient describes the Cardinal's design and function. A strong and powerful in-ground well light.

Solid
Brass

6
Finishes
Available



Vanguard 5



Vanguard 8

Vanguard

The Vanguard is a step beyond the normally recessed wall light and is perfect for illuminating short retaining walls and other niche locations.

Solid
Brass

6
Finishes
Available

Shroud



Nova

Designed to provide in-ground lighting solutions, the Nova is ideal for uplighting a variety of elements.



Eyelid



Flat



Star Grate

Solid
Brass

6
Finishes
Available



Orbital

The Orbital is an alloy hanging fixture that is ideal for trees, gazebos or other structures. The Orbital is the perfect choice when you need a softly lit environment.

A360
Alloy

2
Finishes
Available



Crusader

The Crusader offers a practical solution to most downlight applications.

Solid
Copper



Lancaster

The Lancaster is perfect when trying to achieve a softly lit environment through down lighting or when you desire a moonlighting effect.

Solid
Copper



Conquest

The Conquest is perfect for down lighting with a 360° rotational shroud for glare control.

Solid
Brass

For more
information
and to view more
lighting and color
options, visit:
uniquelighting.com



4
Finishes
Available

LED Accent Small VLO

A premium product, no bulb changing, entirely sealed, optimal light quality, with a built-in feature for adjusting lumen levels. Switch between 3 light outputs in 1 fixture.

Lumens:

- Level 1 = 100
- Level 2 = 200
- Level 3 = 300



LED Accent

Enhanced modern look, stronger performance and superior light quality. Available in 10°, 35° and 60° spread options. Available in 200, 300, and 500 lumen options.

3
Finishes
Available



4
Finishes
Available

LED Accent Large VLO

A premium product, no bulb changing, entirely sealed, optimal light quality, with a built-in feature for adjusting lumen levels. Switch between 3 light outputs in 1 fixture.

Lumens:

- Level 1 = 400
- Level 2 = 600
- Level 3 = 835



2
Finishes
Available

LED Mini All-Purpose Recessed

The compact size, durable design and generous light output assure you get the most out of every install. Comes with 20, 40 and 60 lenses. Comes included with 20°, 40°, and 75° interchangeable optic. Available in 100 and 200 lumen options.



LED Flood VLO

Switch between 3 light levels all in one fixture. Wide beam spread in low-voltage fixture delivers incredible light, while opening up new application possibilities.

Lumens:

- Level 1 = 500
- Level 2 = 675
- Level 3 = 865

2
Finishes
Available



Traditional Dome Fixture

This drop-in fixture in a Centennial Brass finish will naturally patina over time. Compatible with Kichler's 1W and 2W T3/G4 LED Lamps.

Solid
Brass



8-inch Dome LED

Integrated LED fixture is 21" tall and provides 250 lumens from 3W/4.5VA. Available in both 2700K and 3000K.

3
Finishes
Available



8-inch Dome Short Fixture

This Drop-In Fixture is 15" tall and compatible with Kichler's 1W or 2W T5 Wedge LED lamp (sold separately)

1
Finish
Available



8-inch Dome Fixture

This Drop-In Fixture is 21" tall and compatible with Kichler's 1W or 2W T5 Wedge LED lamp (sold separately)

2
Finishes
Available



6-inch Dome LED

Integrated LED fixture is 21.25" tall and provides 250 lumens from 3W/4.5VA. Available in both 2700K and 3000K.

3
Finishes
Available

Deck & Patio Lights

Deck & Patio Lights | Kichler Lighting



LED Half Moon Deck Light Fixture

Integrated LED fixture is 4" in diameter and provides 43 lumens from .86W/1.86VA.



3
Finishes
Available

Half Moon Deck Light Fixture

This drop-in fixture is compatible with Kichler's 1W and 2W T3/G4 Bi-Pin LED lamps.



3
Finishes
Available

Brass Deck Light Fixture

This drop-in fixture is compatible with Kichler's 1W and 2W T5 LED Wedge lamps.



Solid
Brass

Louvered Down Deck Rail Fixture

This drop-in fixture is 6" tall by 1.25" wide and is compatible with Kichler's 1W T5 Wedge LED lamp.



2
Finishes
Available



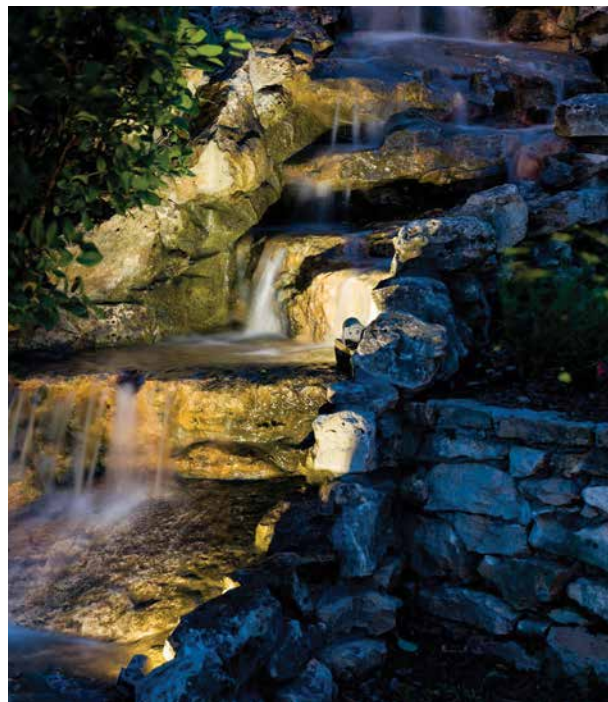
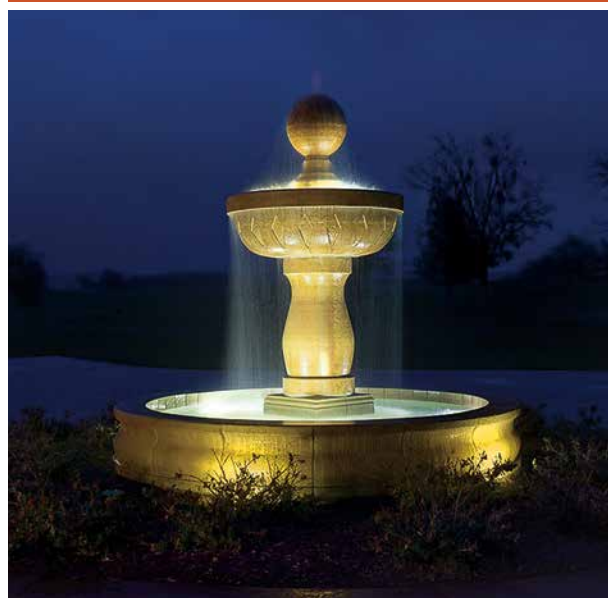
2-in-1 LED Water Accent Light 2700K | 3000K

Can be used in and out of water. The heavy weight 316 Stainless Steel construction is completely sealed and safe for aquatic wildlife. Built in feature allows you to switch between 3 lumen outputs in 1 fixture.

Lumens:

- Level 1 = 100
- Level 2 = 200
- Level 3 = 400

Stainless
Steel



LED Pivoting Hardscapes

This new design offers pivot rotation, enhanced optical lens for uniform light and expanded versatile installation for more creative layout options.

Available in 3.5", 6", 12", and 18" options.

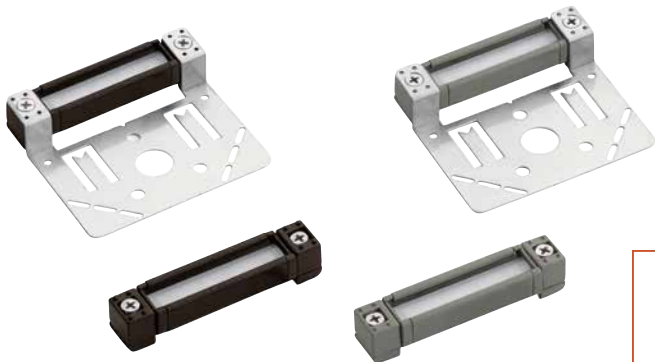
5
Finishes
Available



18"



12"



3.5"



6"



T5 Wedge High Lumen Mini

Wet Location

2.3W, 3.3VA Compares up
to 20W Halogen

lamp
socket



4W MR 16

Damp Location

4W, 5.4VA Compares
up to 20W Halogen

MR16
Bi-Pin



S8 Wedge High Lumen Mini

Wet Location

2.3W, 3.3VA Compares up
to 20W Halogen

S8



7.2W MR 16

Damp Location

7.2W, 9.9VA Compares up
to 50W Halogen

lamp
socket



T3/G4 Bi-Pin High Lumen Mini

Wet Location

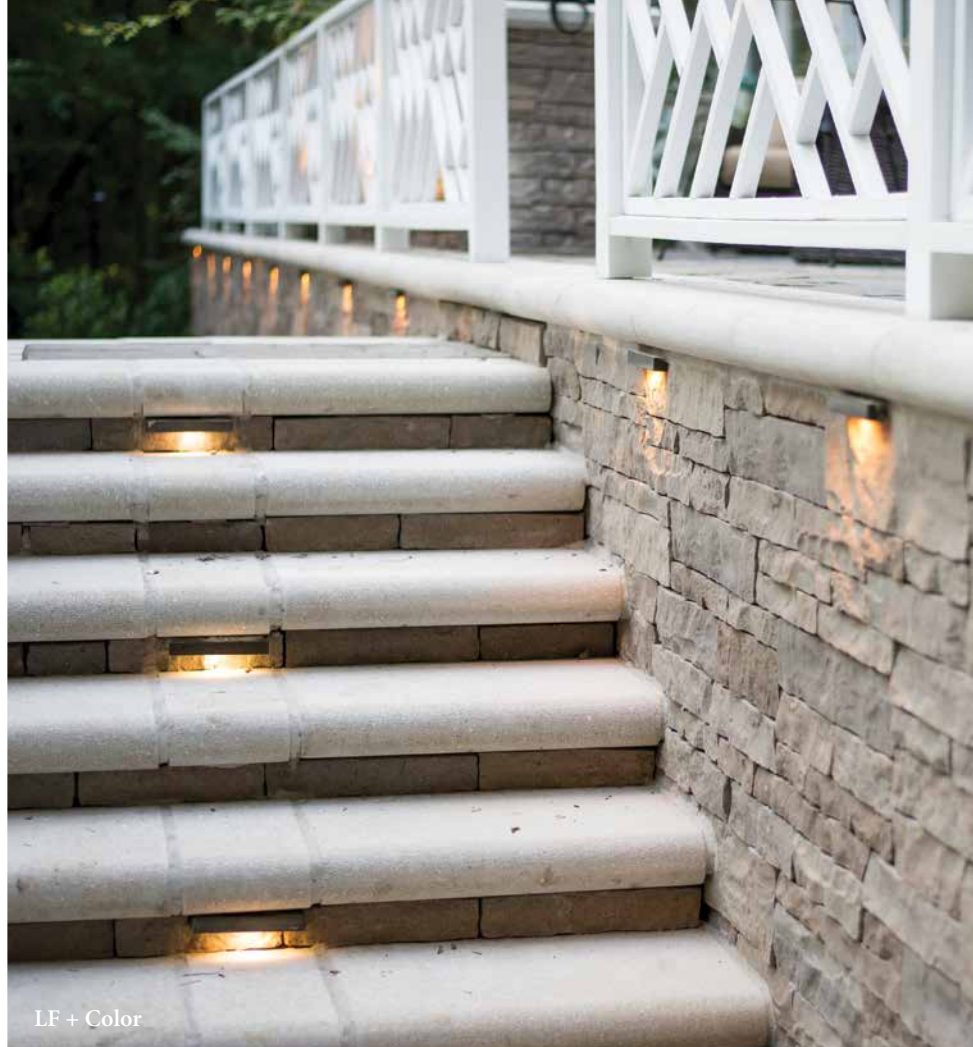
2.3W, 3.3VA Compares up
to 20W Halogen

T3/G4
Bi-Pin

For more information
and to view more lighting
and color options, visit:
kichler.com/landscape



MO + Color

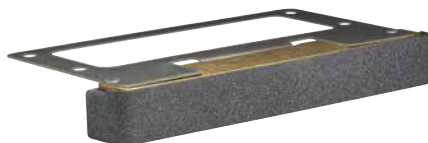


LF + Color

The unique
look and soft
glow of wall
lights adds
interest to any
system design.



PO



16
Finishes
Available

LF + Color

The LF under-the-cap hardscape wall light easily fits between a block wall and a capstone for a neat, clean installation.



13
Finishes
Available

MS

Part of the energy-efficient LED line, the MS includes changeable filters and is available in brass or powder coat finish options for style and performance at night and during the day.



13
Finishes
Available

PO

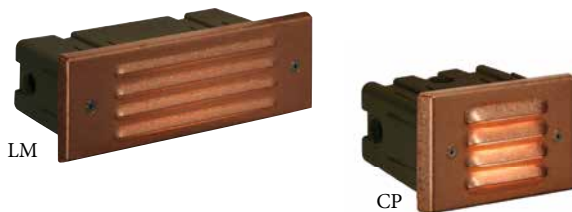
The PO provides glare-free illumination so guests can transition from space to space in comfort and safety. The LED faceplate offers different exterior styling and light-type outputs to match site needs.



14
Finishes
Available

MO + Color

The MO is available with four interchangeable faceplates and four color filters that provide versatility for various lighting applications, including use as a walkway light and recessed-style can light.



CP | LM

The CP and LM are engineered to bring light to walkways, stairways, and decks in busy areas that lack an adjacent planter area for path lighting, or trees for down lighting.

13
Finishes
Available



UN | PD

The UN and PD washes walkways with a smooth, shadow-free illumination that highlights a range of architecture, from the meticulous detail in fine stonework to the richness of a redwood deck.

15
Finishes
Available

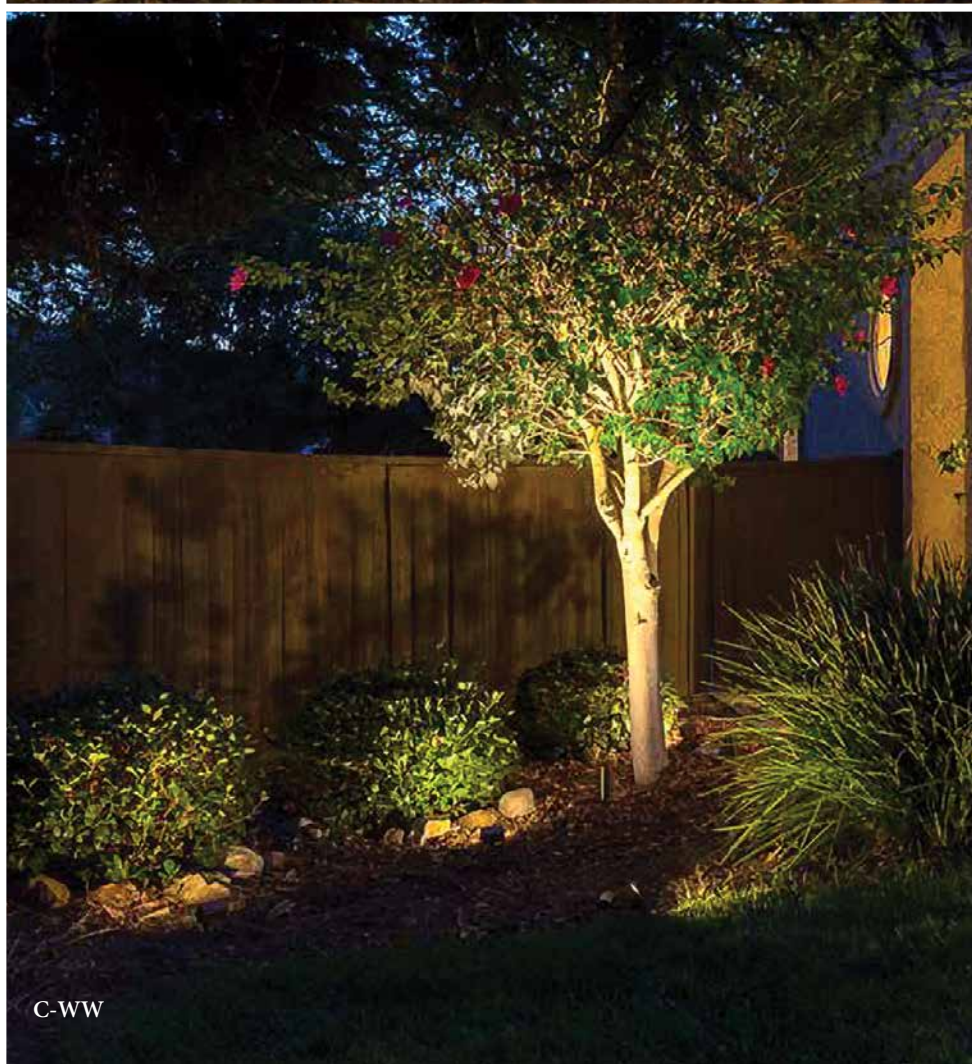


C-PL-4



C-UL

Midgrade brass
line of lighting
with robust,
corrosion
resistance and
elegant style.

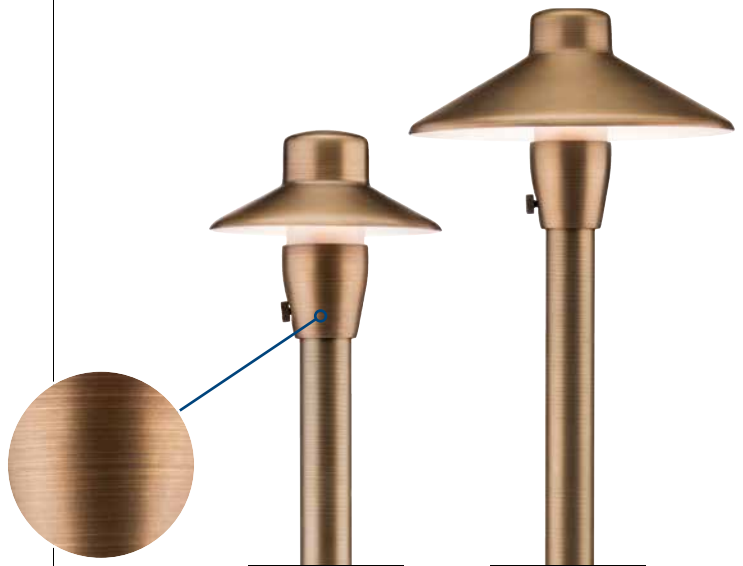


C-WW



C-UL

Part of our midgrade brass C Line, the robust, corrosion-resistant C-UL up light is especially at home in coastal environments.



C-PL-4

C-PL-7

Part of our midgrade brass C Line, the elegant, corrosion-resistant C-PL-7 path light is especially at home in coastal environments.



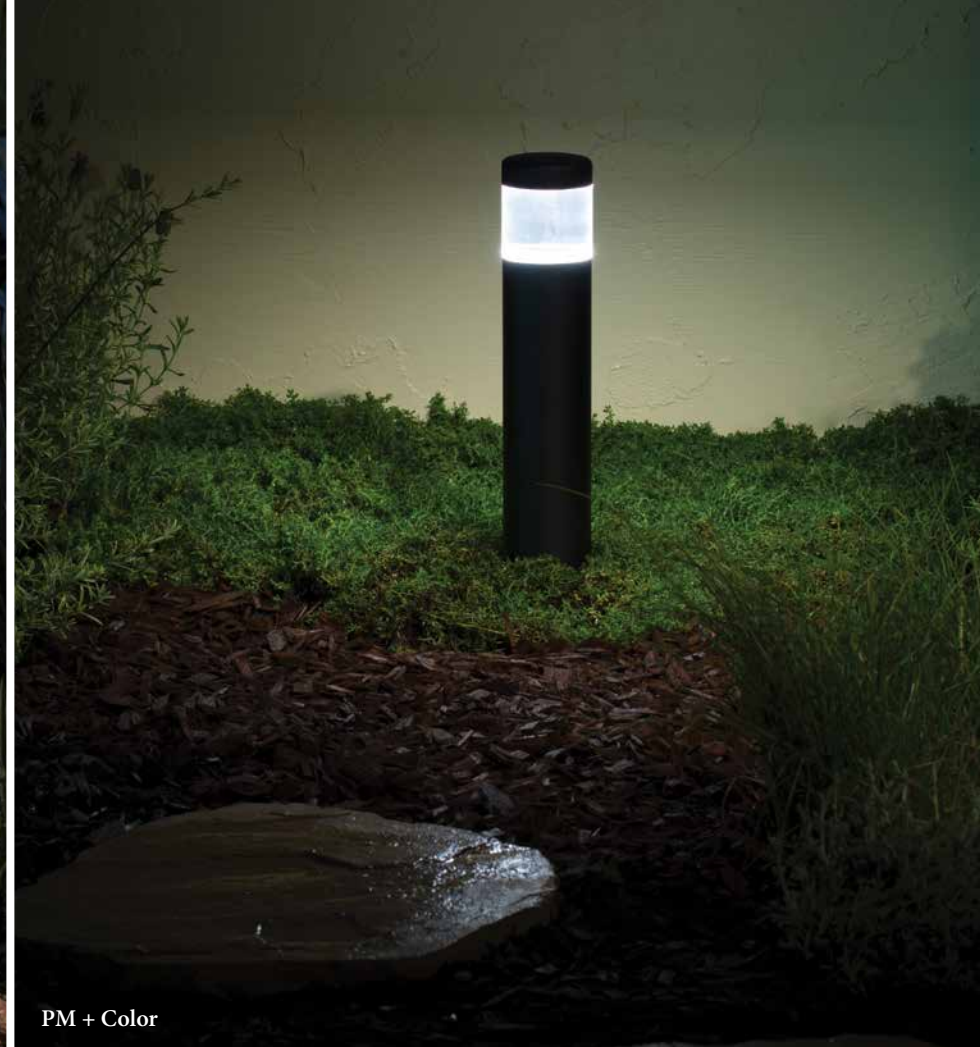
C-WW

Part of our midgrade brass C Line, the sturdy, corrosion-resistant C-WW wall wash is especially at home in coastal environments.



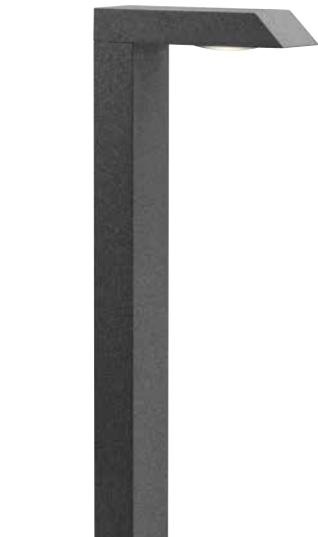
C-DL

Part of our midgrade brass C Line, the versatile, corrosion-resistant C-DL down light is especially at home in coastal environments.



Path lights offer
safe illumination
for walkways and
create ambiance
to highlight
landscape features
along the way.





9
Finishes
Available

M-PL + Color

The ultra-modern M-PL path light combines the versatility of diecast aluminum with minimalist aesthetics to complement a range of contemporary installations.



9
Finishes
Available

PM + Color

Designed for mid-sized landscapes, the PM is engineered with a diffuser cone and optics that work together to produce a long projection beam spread with no glare.



8
Finishes
Available

SP

For the ideal combination of proven quality and unmatched beauty in your outdoor living space, the SP path light is the industry standard.



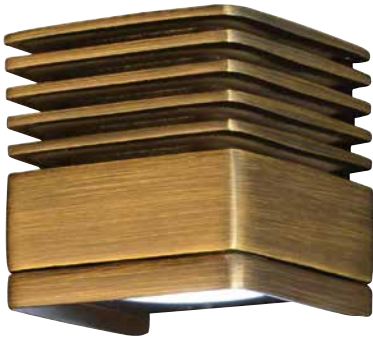
10
Finishes
Available

DM + Color

The essential ingredients of a timeless path light are provided purely through shape and function. The DM is just right for any application.

Down Lights

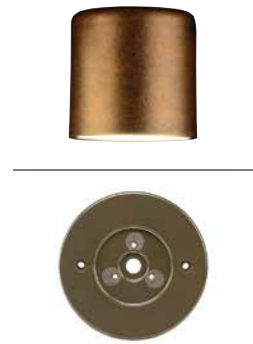
Down Lights | FX Luminaire



NL + Color

The NL boldly represents the next generation of fixed-mount LED down lights. This side-mounted down light includes a mounting bracket that permits tool-free servicing after installation.

16
Finishes
Available



PS + Color

The PS is meant for top-mounting, and is available with an optional copper cover. The PS also includes a mounting bracket that allows for tool free servicing after installation.

16
Finishes
Available



SD + Color

The SD wall light has a simple cylindrical drum design that complements a range of classic and contemporary applications while providing maximum optical control for downward illumination.

9
Finishes
Available



11
Finishes
Available

MD

Versatile directional down light with several mounting options. Accepts MR-16 lamp.

Aluminum construction.



15
Finishes
Available

LE

The elegant LE hanging down light is perfect for gentle illumination in overhead spaces. Available in 1 LED.



9
Finishes
Available

FB

The FB fits nicely into smaller landscapes and tight spaces. Accommodating up to a 3 LED board, the fixture offers all the classic up light benefits in a more compact package.



9
Finishes
Available

WS

Designed with rounded, minimalist features and durable die-cast aluminum, the versatile WS wall wash is the perfect addition to any lighting design.



9
Finishes
Available

RS

As the core fixture of the FX Luminaire up light family, the RS gives designers unsurpassed freedom and flexibility to create a variety of customized applications.

For more
information
and to view
more lighting
and color
options,
visit: fxl.com



1
Finish
Available

BQ

1 LED for illuminating grilling areas. Designed to work with the Luxor® system, or independently with optional plug-in transformer.

Stainless steel.



CW



LV



RG



GW

13
Finishes
Available

FC + Color

The FC is an ideal fit for any LED application, and features an innovative installation sleeve that allows for easy removal and adjustment, especially in concrete.



14
Finishes
Available

KG + Color

Inside the subterranean KG is a powerful LED module that allows for precise aiming. This capability refines the look of any landscape feature or structure.



1
Finish
Available

LL + Color

The LL brings all of the efficiency and reliability of LED technology to underwater lighting. Highly versatile, it works with all FX LED boards (1-9), and is compatible with an array of filters that allow water to be colored to match the facade.



DX

The DX controller is an easy to program, low-voltage lighting transformer that brings customers the convenience of pre-installed astronomical timing and event based programming. This means there is no need for end users to buy plug-in accessories such as timers and photocells.



EX

The EX transformer provides an economical, low-wattage power and control option for LED lighting projects

Path Lights

Path Lights | Vista Professional Outdoor Lighting



2265

A perfect fit for the contemporary landscape design, this low voltage path light fixture is constructed of die-cast, copper-free aluminum for strength and reliability.

18

Finishes
Available



2267

A perfect fit for the contemporary landscape design, this low voltage path light fixture is constructed of die-cast, copper-free aluminum for strength and reliability.

18

Finishes
Available



2267-BSO

A perfect fit for the contemporary landscape design, this low voltage path light fixture is constructed of die-cast, copper-free aluminum for strength and reliability.

Olde
Brass



6507

This low voltage LED path light fixture is constructed from heavy-gauge, copper-free, die-cast aluminum for lasting strength and durability under all weather conditions.

18

Finishes Available



6500

This elegantly designed low voltage path light fixture is constructed of die-cast, copper-free aluminum for strength and reliability.

18

Finishes Available



4708

This low voltage LED path light fixture is constructed from heavy-gauge, copper-free, die-cast aluminum for lasting strength and durability under all weather conditions.

18

Finishes Available



4704

A perfect fit for the contemporary landscape design, this low voltage path light fixture is constructed of die-cast, copper-free aluminum for strength and reliability.

18

Finishes Available



4201

A perfect fit for the contemporary landscape design, this low voltage path light fixture is constructed of die-cast, copper-free aluminum for strength and reliability.

18

Finishes Available

**For more information
and to view more lighting
and color options,
visit: vistapro.com**

Up Lights

Up Lights | Vista Professional Outdoor Lighting



2216



3106



2216

Highly versatile, this low voltage up & accent fixture is constructed of die-cast, copper-free aluminum for strength and reliability. The fully rotatable shroud is fitted with dual silicone o-ring gaskets to ensure a superior weather-tight seal under harsh conditions.

18

Finishes
Available



5006

Combining the best of both worlds, the 5006 Up & Accent Fixture with shroud comes factory installed with Vista's new MR-16 LED lamp. This low voltage up & accent fixture is constructed of die-cast, copper-free aluminum for strength and reliability.

18

Finishes
Available



5105

With the energy savings of LED technology, the integrated, single LED chip/emitter is available in your choice of 2W, 3W and 4W. The fixture provides a powerful output range from 200-400 delivered lumens and also available in Warm, Neutral or Cool Color temp options.

18

Finishes
Available



2216-BSO

Highly versatile, this low voltage up & accent fixture is constructed of thick-wall die-cast brass for strength and reliability.

Olde
Brass



5014i

The low voltage 5014i Up and Accent fixture is configured with hi-performance optic, integral driver and is constructed of die cast aluminum with wattage ranging from 1.5W to 3.5W.

18
Finishes
Available



5006-BSO

Combining the best of both worlds, the 5006 Up & Accent Fixture with shroud comes factory installed with Vista's new MR-16 LED lamp. This low voltage up & accent fixture is constructed of thick-wall die-cast brass for strength and reliability.

Olde
Brass



3106

This low voltage up and accent fixture is configured with hi-performance reflector optics, integral drivers, and is constructed of die cast aluminum. These LEDs will be able to deliver comparable light levels in the 20W, 35W, and 50W halogen range (up to 800 lumens) with wattages ranging from 4.5W to 13W.

18
Finishes
Available



5105-BSO

This powerful and compact low voltage flood light fixture constructed of thick-wall die-cast brass and comes factory installed with advanced chip-on-board LED. The fixture provides a powerful output range from 200-400 delivered lumens.

Olde
Brass



2416

This medium size low voltage up & accent fixture is constructed of injection-molded, fiber-reinforced composite for strength and high UV stability and is warranted for ten years against corrosion.

18
Finishes
Available



5272

This ruggedly designed low voltage in-ground fixture is constructed of injection-molded, fiber-reinforced composite for strength and high UV stability and is warranted for ten years against corrosion.

18
Finishes
Available



5262

This ruggedly designed low voltage in-ground fixture is constructed of die-cast, copper-free aluminum for strength and reliability.

18
Finishes
Available



4243

Recessed within the elements of steps or walls for low-level area lighting, this low voltage 'eyelid' step light fixture is constructed of die-cast, copper-free aluminum for strength and reliability.

18
Finishes
Available



4260

Tucked unobtrusively into small places, the versatile 4260 Rail Light fixture provides outstanding illumination while creating beautiful effects without revealing the source.

18
Finishes
Available



4246 | 4242

Recessed within the elements of steps or walls for low-level area lighting, this low voltage louvered face brick light fixture is constructed of a stamped and formed, copper-free, aluminum housing with ½" knockouts on the back and sides.

18
Finishes
Available



ES-150

A rugged and reliable 150W transformer, ideal for smaller sites and energy-smart LED projects. A 20-gauge, polished & clear coated stainless steel cabinet is weathertight and protects the components from moisture and debris. Customize with Vista mechanical, digital, or astronomic timer modules.

Stainless
Steel



MT-300

Our next generation of transformers includes many new features while maintaining the quality and reliability that Vista is known for. Some of the features include an extra-large terminal strip for multiple low voltage cable connections and a 120-volt terminal strip for easy hardwiring.

Stainless
Steel

TCS-150 | TCS-300

The TCS-150 and TCS-300 are the industry's most advanced yet intuitive Landscape Lighting Transformer on the market today. Four Total Zones! Three individually programmable zones with dimming capability and astronomical timing. AND an industry first Smart Zone terminal, supplying uninterrupted power for WiFi enabled smart fixtures and smart lamps that have their own control feature.

Stainless
Steel



Fire & Water Features





Water & Fire Bowls | Fire Pits | Torches | Scuppers



Maya Fire Bowl

- Copper
 - Sizes:
24" x 24" or 30" x 30"
 - Includes:
Fire Plate, Burner, Nipple, Lava Rock,
Mounting Bracket
-



Maya Fire & Water Bowl

- Copper
 - Sizes:
24" x 24" or 30" x 30"
 - Includes:
Fire Plate, Burner, Nipple, Lava Rock,
Mounting Bracket, 3/4" Water Inlet
-



Cazo Fire Bowl

- Copper
 - Sizes:
24" or 30"
 - Includes:
Fire Plate, Burner, Nipple, Lava Rock,
Mounting Bracket
-



Cazo Fire & Water Bowl

- Copper
 - Sizes:
24" or 30"
 - Includes:
Fire Plate, Burner, Nipple, Lava Rock,
Mounting Bracket, 3/4" Water Inlet
-



Maya Fire Bowl

- GFRC
- Sizes:
24" x 24" or 30" x 30"
- Includes:
Fire Plate, Burner, Nipple, Lava Rock,
Mounting Bracket



Maya Fire & Water Bowl

- GFRC
- Sizes:
24" x 24" or 30" x 30"
- Includes:
Fire Plate, Burner, Nipple, Copper Spillway,
Lava Rock, Mounting Bracket, 3/4" Water Inlet



Cazo Fire Bowl

- GFRC
- Sizes:
24" or 31"
- Includes:
Fire Plate, Burner, Nipple, Lava Rock, Mounting Bracket



Cazo Fire & Water Bowl

- GFRC
- Sizes:
24" or 31"
- Includes:
Fire Plate, Burner, Nipple, Copper Spillway, Lava Rock,
Mounting Bracket, 3/4" Water Inlet



Maya Fire & Water Bowl | Wide Spillway

- Concrete
- Size: 24" x 24"
- Includes: Fire Plate, Burner, Nipple, Lava Rock, Mounting Bracket



Maya Fire & Water Bowl | Twin Spillway

- GFRC
- Size: 30" x 30"
- Includes: Fire Plate, Burner, Nipple, Lava Rock, Mounting Bracket, 3/4" Water Inlet

Avalon Fire Bowl

- GFRC
- Size: 30" x 30"
- Includes: Fire Plate, Burner, Nipple, Lava Rock, Mounting Bracket, 3/4" Water Inlet



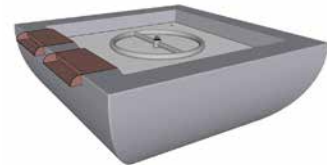
Avalon Fire & Water Bowl | Wide Spillway

- GFRC
- Size: 24" x 24"
- Includes: Fire Plate, Burner, Nipple, Lava Rock, Mounting Bracket, 3/4" Water Inlet



Avalon Fire & Water Bowl | Twin Spillway

- GFRC
- Size: 30" x 30"
- Includes: Fire Plate, Burner, Nipple, Lava Rock, Mounting Bracket, 3/4" Water Inlet



Sedona Fire Bowl

- GFRC
- Sizes: 27" or 33"
- Includes: Fire Plate, Burner, Nipple, Lava Rock, Mounting Bracket



Sedona Fire & Water Bowl

- GFRC
- Sizes: 27" or 33"
- Includes: Fire Plate, Burner, Nipple, Lava Rock, Mounting Bracket, 3/4" Water Inlet



Maya Fire & Water Bowl | Wide Spillway

- Copper
- Size: 24" x 24"
- Includes: Fire Plate, Burner, Nipple, Lava Rock, Mounting Bracket, 3/4" Water Inlet



Maya Fire & Water Bowl | Twin Spillway

- Copper
- Size: 30" x 30"
- Includes: Fire Plate, Burner, Nipple, Lava Rock, Mounting Bracket, 3/4" Water Inlet

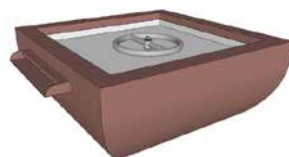
Avalon Fire Bowl

- Copper
- Size: 30" x 30"
- Includes: Fire Plate, Burner, Nipple, Lava Rock, Mounting Bracket, 3/4" Water Inlet



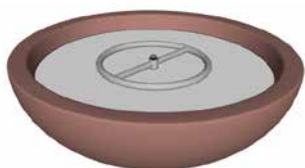
Avalon Fire & Water Bowl | Wide Spillway

- Copper
- Size: 24" x 24"
- Includes: Fire Plate, Burner, Nipple, Lava Rock, Mounting Bracket



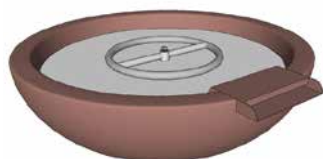
Avalon Fire & Water Bowl | Twin Spillway

- Copper
- Size: 24" x 24"
- Includes: Fire Plate, Burner, Nipple, Lava Rock, Mounting Bracket, 3/4" Water Inlet



Sedona Fire Bowl

- Copper
- Sizes: 27" or 33"
- Includes: Fire Plate, Burner, Nipple, Lava Rock, Mounting Bracket, 3/4" Water Inlet



Sedona Fire & Water Bowl

- Copper
- Sizes: 27" or 33"
- Includes: Fire Plate, Burner, Nipple, Lava Rock, Mounting Bracket, 3/4" Water Inlet



Del Mar Fire Pit

- Size: 60" x 28"
- Includes: Fire Pan, Burner, Key Valve, Key, Hoses, Lava Rock



Sedona Fire Pit

- Size: 49"
- Includes: Fire Pan, Burner, Key Valve, Key, Hoses, Lava Rock



Cazo Fire Pit

- Size: 48"
- Includes: Fire Pan, Burner, Key Valve, Key, Hoses, Lava Rock



Coronado Fire Pit | Powder Coat

- Size: 60" x 28"
- Includes: Fire Pan, Burner, Key Valve, Key, Hoses, Lava Rock



Coronado Fire Pit | Stainless Steel

- Size: 48" x 28"
- Includes: Drop-in Pan, Burner, Brass Valve with Chrome Cover, Key, Hoses, Lava Rock



Catalina Fire Pit | Woodgrain

- Size: 48" x 28"
- Includes: Drop-in Pan, Burner, Brass Valve with Chrome Cover, Key, Hoses, Lava Rock



Trojan Fire Torch

- Diameter: 8"
- Height: 14"
- 20,000 BTUs



Lantern Fire Torch

- Diameter: 8"
- Height: 14"
- 20,000 BTUs



Flower Fire Torch

- Diameter: 7"
- Height: 14"
- 20,000 BTUs



Gothic Fire Torch

- Diameter: 3 3/4"
- Height: 14"
- 20,000 BTUs



Havana Fire Torch

- Diameter: 3 3/4"
- Height: 14"
- 20,000 BTUs



Hawi Fire Torch

- Diameter: 3 3/4"
- Height: 14"
- 20,000 BTUs



Torch Stand

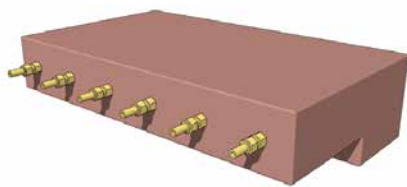
- Width: 24"
- Depth: 24"
- Total Height: 78"

The Outdoor Plus Torches

Each torch is made from high grade 304 stainless steel for durability against heat and nature's elements. Match Lit or Electronic Options Available.

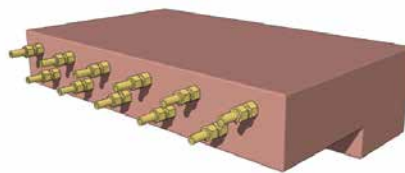


Match Lit comes equipped with barrel valve for flame height adjustment.



**Rain Flow
Water Scupper**

- Copper
- 8"W x 4"H x 7"L
- 12"W x 4"H x 7"L



**Double Rain Flow
Water Scupper**

- Copper
- 8"W x 4"H x 7"L
- 12"W x 4"H x 7"L



**Smooth Flow Radius
Water Scupper**

- Copper
- 8"W x 4"H x 7"L
- 12"W x 4"H x 7"L



Flat Pan & Burner Kit

- 30" Diameter
- 24" Double Burner
- Match Lit or Electronic Options Available



Flat Pan & Brass Bullet Burner Kit

- 30" Diameter
- 24" Bullet Burner
- Match Lit or Electronic Options Available



Drop In Pan & Burner Kit

- 31" Diameter
- 24" Double Burner
- Match Lit or Electronic Options Available



Drop In Pan & Brass Bullet Burner Kit

- 31" Diameter
- 24" Bullet Burner
- Match Lit or Electronic Options Available



Flat Pan & Burner Kit

- 48" x 12"
- 42" x 6" H-Burner
- Match Lit or Electronic Options Available



Flat Pan & Brass Bullet Burner Kit

- 48" x 12"
- 36" x 6" H-Burner
- Match Lit or Electronic Options Available



Drop In Pan & Burner Kit

- 48" x 12"
- 42" x 6" H-Burner
- Match Lit or Electronic Options Available



Drop In Pan & Brass Bullet Burner Kit

- 48" x 12"
- 36" x 6" H-Burner
- Match Lit or Electronic Options Available



Sanctuary Collection Concrete Fire Furnishings

Beautiful high-strength, glass fiber reinforced concrete enclosures in a variety of shapes and sizes - Perfect centerpiece for your private oasis

- **Sanctuary 1:**
 - 56"L x 38"W x 16"H
 - Available in TMSI*
 - Slate color Finish
- **Sanctuary 2:**
 - 39"W x 18"H
 - Available in TMSI or MT*
 - Slate color Finish
- **Sanctuary 3:**
 - 29"W x 14"H
 - Available in TMSI or MT*
 - Slate color Finish

* Thermocouple Manual Safety with Spark Ignition (TMSI)
Match Throw (MT)



Sanctuary 1



Sanctuary 2

Sanctuary 3



AnF (Assemble and Finish) Fire Pit Enclosures

Simple to assemble and available in a variety of sizes and styles to fit any backyard

- Round - 42", 48" or 60"
- Square - 48" or 60"
- Linear - 48", 66", 74", 96"



Round



Square



Linear



Essex Fire Bowl

- Concrete
- 30" Diameter
- Automated or Manual Operation
- Natural Gas or Propane
- Available in a variety of finishes and colors



Essex Fire Bowl

- Hammered Copper
- 30" Diameter
- Automated or Manual Operation
- Natural Gas or Propane



Essex Fire & Water Bowl

- Concrete
- 30" Diameter
- Automated or Manual Operation
- Natural Gas or Propane
- Available in a variety of finishes and colors



Essex Fire & Water Bowl

- Hammered Copper
- 30" Diameter
- Automated or Manual Operation
- Natural Gas or Propane



Corinthian Fire Bowl

- Concrete
- 30" x 30"
- Automated or Manual Operation
- Natural Gas or Propane
- Available in a variety of finishes and colors



Corinthian Fire Bowl

- Hammered Copper
- 30" x 30"
- Automated or Manual Operation
- Natural Gas or Propane



Corinthian Fire & Water Bowl

- Concrete
- 30" x 30"
- Automated or Manual Operation
- Natural Gas or Propane
- Available in a variety of finishes and colors



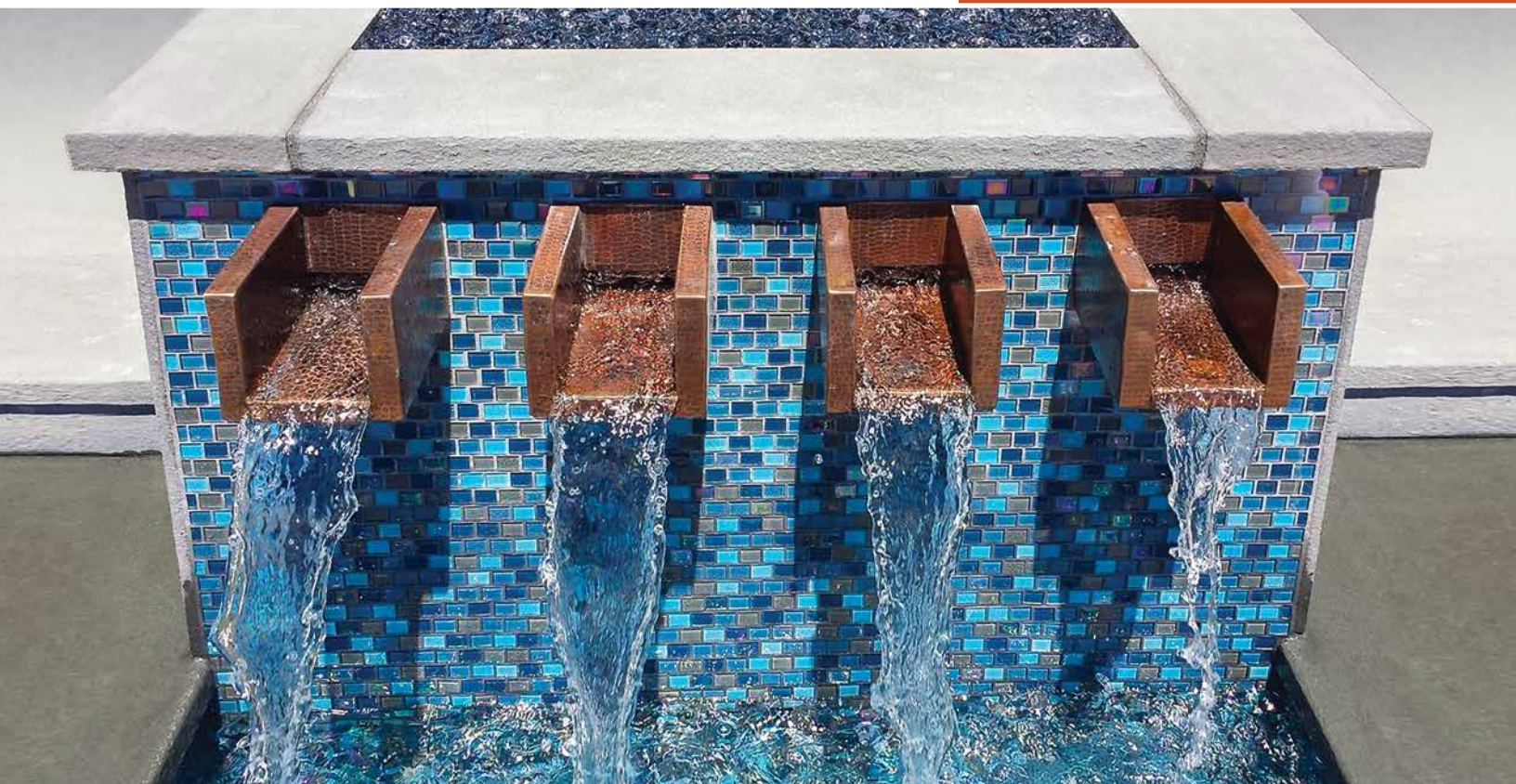
Corinthian Fire & Water Bowl

- Hammered Copper
- 30" x 30"
- Automated or Manual Operation
- Natural Gas or Propane



Legacy Fire Bowl

- Hammered Copper
- 30" Diameter
- Automated or Manual Operation
- Natural Gas or Propane



Round Water Scupper

- Hammered Copper
- 12"L x 4" Diameter



Wedge Water Scupper

- Hammered Copper
- 11"L x 8.38"W x 4.97"H



Square Radius Water Scupper

- Hammered Copper
- 11.38"L x 7"W x 6.75"H



Square Water Scupper

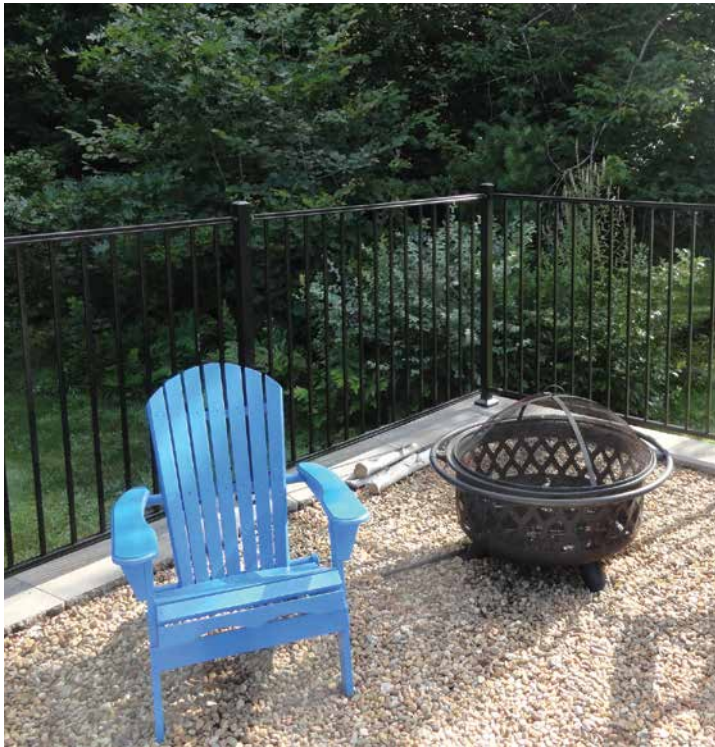
- Hammered Copper
- 12"L x 10.13"W x 6.25"H

Fencing



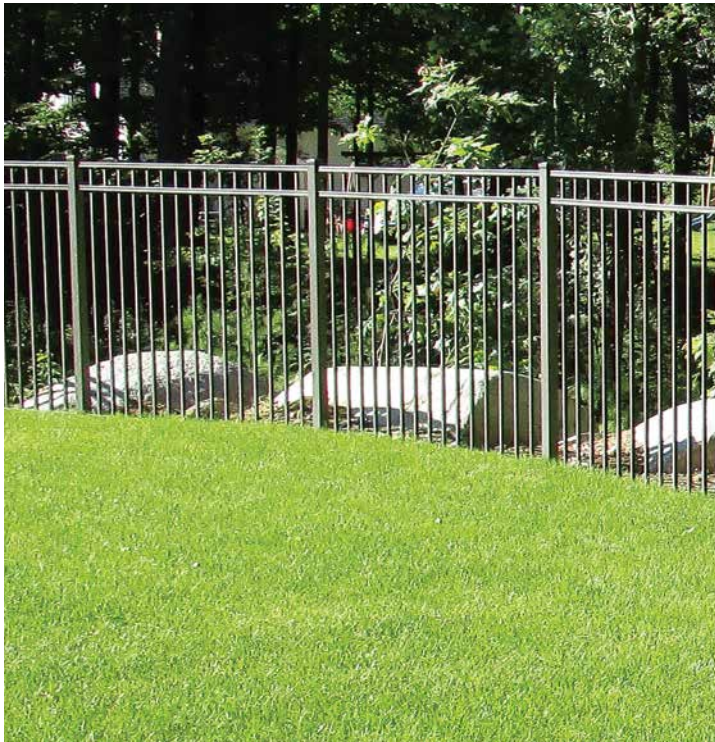
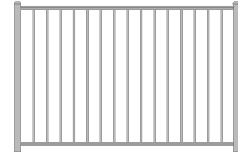


Aluminum | Polyrail | Designer



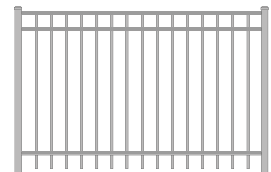
Model 3220

- 2 Rail - Flat Top
- Height: 48"
- Length: 6' Sections



Model 3230

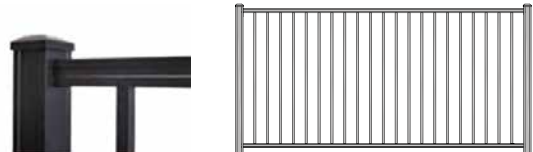
- 3 Rail - Flat Top
- Heights: 36", 42", 48", 55", 60"
- Length: 6' Sections





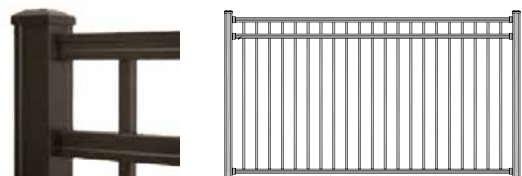
Model 4220

- 2 Rail - Flat Top
- Heights: 48.5", 54"
- Length: 8' Sections



Model 4230

- 3 Rail - Flat Top
- Heights: 48", 54", 60", 72"
- Length: 8' Sections

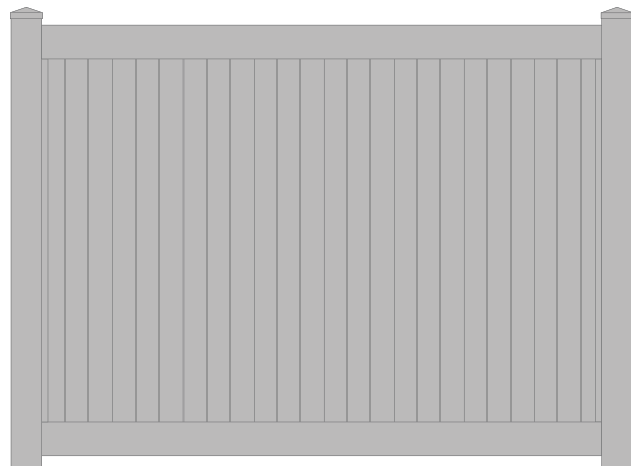


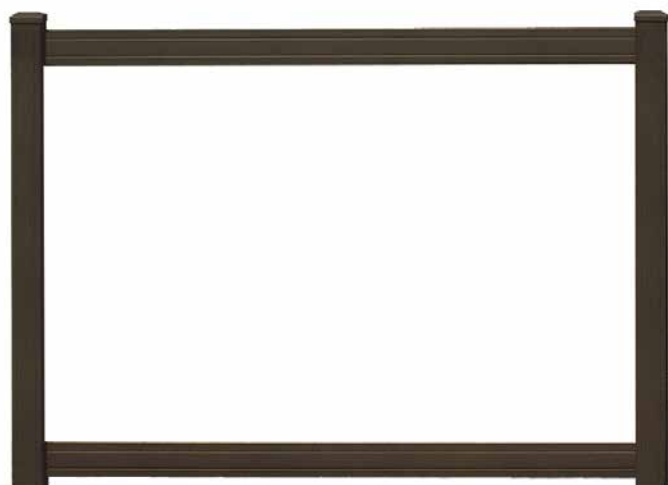


Beauty & function come together with these modern interlocking tongue & groove tri-max panels with aluminum reinforced bottom rail for added strength.

- Heights: 60", 72"
- Width: 96" Centers
- Colors:
White | Tan | Mocha
- Matching gates available

3
Colors



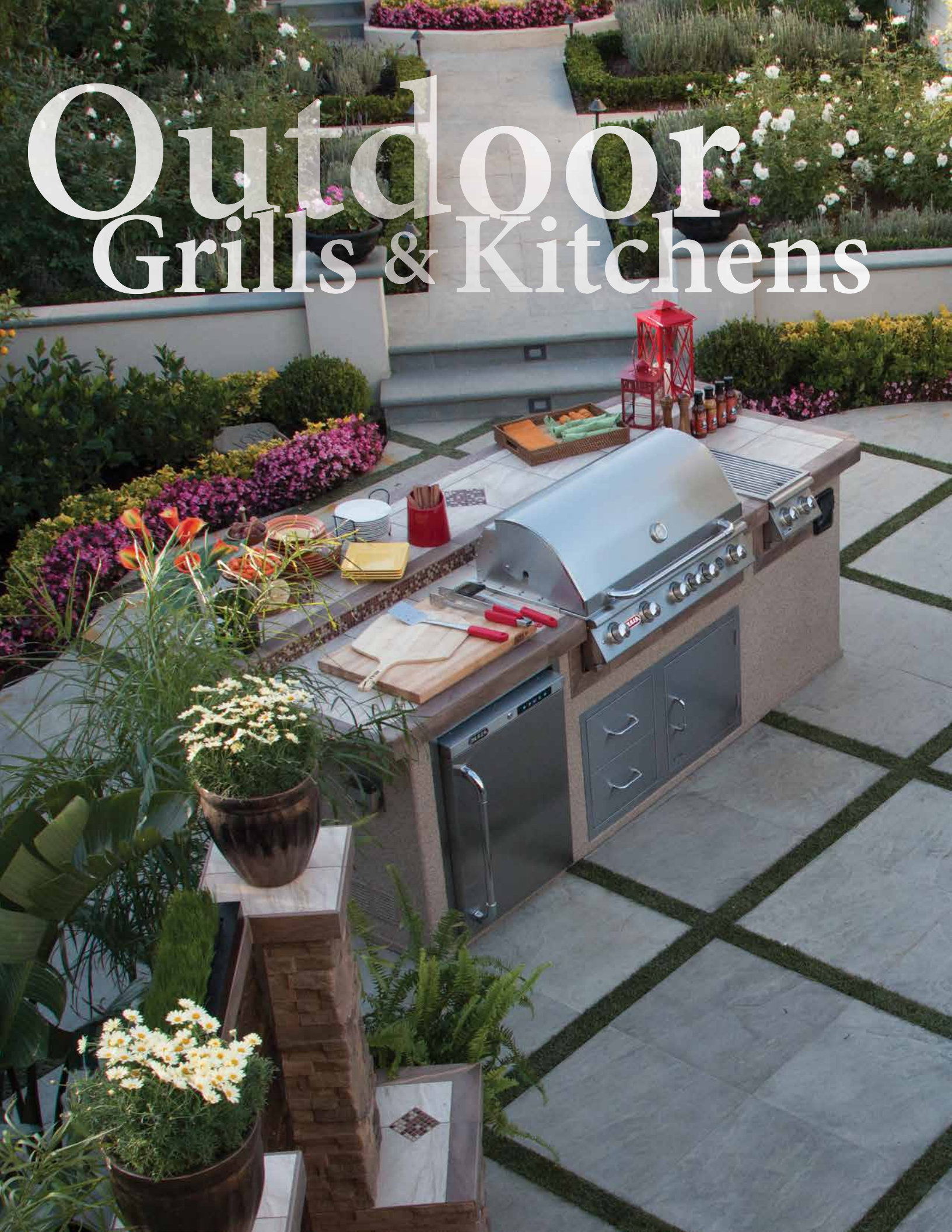


Powder coated aluminum frame fencing provides privacy with a clean look.

- Heights: 48", 60", 72"
- 12 Standard AAMA 2604 Compliant Powder Coated Aluminum Frame Colors
- 3 Standard In-Fill Colors:
White | Tan | Mocha
- Matching gates available

12
Frame
Colors

3
In-fill
Colors



Outdoor Grills & Kitchens



Grill Heads | Outdoor Kitchens | Grill Accessories

Grill Heads



Piezo igniters/ Zinc Knobs



Brahma™ Cart



Solid Stainless Steel Grates

Grill Heads | Bull Grills



Flagship Grill

Angus™

- 75,000 BTUs
- 4 Cast Stainless Steel Burners
- Infrared Burner 15,000 BTUs
- Single Piece Dual Lined Hood
- Piezo igniters/ Zinc Knobs
- Solid Stainless Steel Grates
- Heavy Duty Thermometer
- SS Rotisserie Motor
- Twin Lighting System
- Warming Rack 210 Sq. In.
- Cooking Surface 810 Sq. In.
- Lifetime warranty



Flagship Grill

Brahma™

- 90,000 BTUs
- 5 Cast Stainless Steel Burners
- Infrared Burner 15,000 BTUs
- Single Piece Dual Lined Hood
- Piezo igniters/ Zinc Knobs
- Solid Stainless Steel Grates
- Heavy Duty Thermometer
- SS Rotisserie Motor
- Twin Lighting System
- Warming Rack 266 Sq. In.
- Cooking Surface 1,026 Sq. In.
- Lifetime warranty



Flagship Grill

Diablo™

- 105,000 BTUs
- 6 Cast Stainless Steel Burners
- Infrared Burner 15,000 BTUs
- Single Piece Dual Lined Hood
- Piezo igniters/ Zinc Knobs
- Solid Stainless Steel Grates
- Heavy Duty Thermometer
- SS Rotisserie Motor
- Twin Lighting System
- Warming Rack 322 Sq. In.
- Cooking Surface 1,242 Sq. In.
- Lifetime warranty



Intro Grill

Outlaw™

- 60,000 BTUs
- 4 Cast Iron Porcelain Coated Burners
- Single Piece Dual Lined Hood
- Piezo igniters/ Zinc Control Knobs
- Solid Stainless Steel Grates
- Heavy Duty Thermometer
- Warming Rack 210 Sq. In.
- Cooking Surface 810 Sq. In.

All Bull grills also available in a cart.

Angus™ Cart shown



Premium Grill

Steer™

- 45,000 BTUs
- 3 Welded Stainless Steel Burners
- Single Piece Dual Lined Hood
- Piezo igniters/ Zinc Control Knobs
- Solid Stainless Steel Grates
- Heavy Duty Thermometer
- Built in trim kit
- Warming Rack 160 Sq. In.
- Cooking Surface 556 Sq. In.



Premium Grill

Lonestar™

- 60,000 BTU's
- 3 Welded Stainless Steel Burners
- Single Piece Dual Lined Hood
- Piezo igniters/ Zinc Control Knobs
- Solid Stainless Steel Grates
- Heavy Duty Thermometer
- Built in trim kit
- Warming Rack 160 Sq. In.
- Cooking Surface 810 sq. in



Premium Charcoal Grill

Bison™

- Stainless Steel Construction
- Stainless Steel Grates
- Adjustable Charcoal Bed
- Heavy Duty Thermometer
- Warming Rack 210 Sq. In.
- Cooking Surface 810 Sq. In.



Commercial Style Griddle

Stockman™

- 45,000 BTUs
- 3 Welded Stainless Steel Burners
- Piezo igniters/ Zinc Control Knobs
- Cast Iron Chromium Plated Griddle
- Full Size Grease Tray
- Cooking Surface 556 Sq. In.



Start enjoying
the amazing taste
of homemade
gas-fired Italian
made pizzas
in your own
backyard today.





Gas Fired Pizza Oven

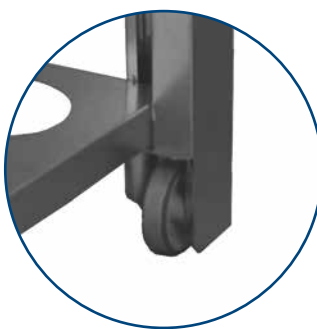
The Bull Gas Fired Pizza oven offers the same great features of wood-fired ovens but with the added convenience of cooking with gas. Our Gas Fired Pizza Ovens can be fueled using Propane or Natural Gas (with a conversion kit, sold separately) and don't require the ash cleanup that is associated with their wood-fired counterparts.

Standard Features:

- Proudly made in Italy with European parts for authentic quality
- Fully operational in approximately fifteen minutes of preheating
- Solid-weld dome construction using 2.5 millimeter of 441 stainless steel reinforced with a 5-millimeter Corten steel panel in the cooking chamber
- Unique cooking chamber, domed front-to-back and side-to-side, eliminates hot spots and ensures uniform heat distribution
- Slide-out handles and caster wheels allow mobility and precise placement
- Painted exterior surfaces are electro-galvanized before powder-coating, providing superb protection against corrosion
- Maximum temperature rating of 900°F / 482.2°C; the highest on the market. Food Grade Cooking Stones
- 20 hour fuel time at the max setting with a 20 lbs. Propane Tank; can also be fueled using Natural Gas with the optional conversion kit.
- Portable
- 36,000 BTUs



Available as a stand-alone head for use in an outdoor kitchen



Caster wheels allow mobility and precise placement



Unique cooking chamber ensures uniform heat distribution



Door/ Propane Drawer Combo



Door/Drawer Combo



Horizontal Access Door



Side Kick Cart Side Burner



Single Drawer



Double Drawer



Pull Out Trash Drawer



Power Burner



Warming Drawer



Propane Drawer



Large Single Drawer



Single Side Burner



Vertical Access Door



Double Door



Door Drawer Pantry Insert



Slide-In Removable Griddle



Ice Chest



Slide in Double Side Burner



Bottle Opener



Grill Jacket



30" Bar Caddy



Infrared Searing Grill Burner



Grill Cart Covers



Propane Tank Holder Mount



Stainless Steel Sink & Faucet



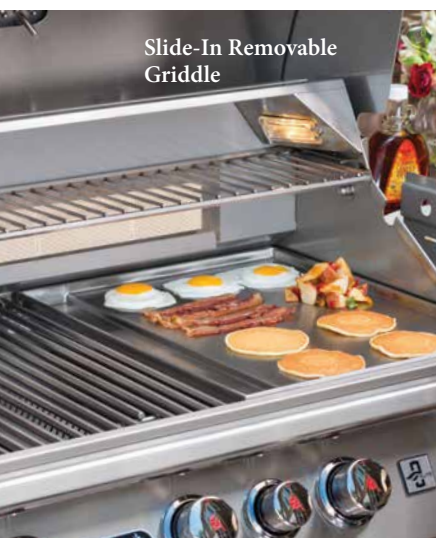
Vent Hood - Twin Fan



Premium Refrigerator



Refrigerator



Slide-In Removable Griddle



Ice Chest



Refrigerator



Outdoor Kitchen™

- Angus BBQ Stainless Steel 4-burner grill 75,000 BTU's
- Stucco base - Choice of 4 colors
- Counter top - 20 Imported Tile options

*Islands photographed with Upgraded features

Custom Islands Available



BBQ Brahma™

- Brahma BBQ Stainless Steel 5 Burner grill 90,000 BTU's
- Stucco or Rock Base options as shown
- Counter top - 20 imported Tile options

*Islands photographed with Upgraded features

Custom Islands Available



Master Q™

- Angus BBQ Stainless Steel 4 Burner grill 75,000 BTU's
- Stucco or Rock Base options as shown
- Counter top - 20 imported Tile options

*Islands photographed with Upgraded features

Custom Islands Available



Western Q™

- Angus BBQ Stainless Steel 4-burner grill 75,000 BTU's
- Stucco Base - Choice of 4 Colors
- Counter top - 20 Imported Tile options

*Islands photographed with Upgraded features

Custom Islands Available



Gourmet Q™ Raised Bar

- Angus BBQ Stainless Steel 4-burner grill 75,000 BTU's
- Stucco base - Choice of 4 colors
- Counter top - 20 Imported Tile options

*Islands photographed with Upgraded features

Custom Islands Available



Supreme Q™

- Angus BBQ Stainless Steel 4-burner grill 75,000 BTU's
- Stucco Base - Choice of 4 Colors
- Counter top - 20 Imported Tile options

*Islands photographed with Upgraded features

Custom Islands Available



Bull Kegerator™

- Outdoor Rated & NSF Certified
- LED Interior Light
- Includes Single Tap
- 304 Stainless Steel Construction
- Reversible Self Closing Door
- Designed to be Free Standing or Built In
- Temperature Range of 32 - 50° F

Available in double tap option



Outdoor Kitchen



Outdoor Kitchen



Best Buy 100

- Countertop - 76.75" x 31"
- Base - 69.5" x 27.5"
- Angus Grill Head - Stainless Steel 4-Burner 75,000 BTUs
- Porcelain Tile Countertop
- Stucco or Rock Base
- Stainless Steel Refrigerator 4.4 cu. ft. / with Frame
- Stainless Steel Double Door
- Umbrella Hole
- GFCI Electric Outlet



Best Buy 200

- Countertop - 90.75" x 65" x 30"
- Base - 74.75" x 59.5" x 27.5"
- Angus Grill Head - Stainless Steel 4-Burner 75,000 BTUs
- Porcelain Tile Countertop
- Stucco or Rock Base
- Single Side Burner
- Stainless Steel Refrigerator 4.4 cu. ft. / with Frame
- Stainless Steel Double Door
- Bottle Opener & Catch
- Umbrella Hole
- GFCI Electric Outlet



Best Buy 300

- Countertop - 108.75" x 55" x 43"
- Base - 82.5" x 27.5"
- Angus Grill Head - Stainless Steel 4-Burner 75,000 BTUs
- Porcelain Tile Countertop
- Rock Base
- Single Side Burner
- Stainless Steel Refrigerator 4.4 cu. ft. / with Frame
- Stainless Steel Double Door
- Bottle Opener & Catch
- Umbrella Hole
- GFCI Electric Outlet

Best Buy 400

- Countertop - 102.5" x 114.25" x 31"
- Base - 93.5" x 92.25" x 25.5"
- Angus Grill Head - Stainless Steel 4-Burner 75,000 BTUs
- Porcelain Tile Countertop
- Rock Base
- Single Side Burner
- Stainless Steel Refrigerator 4.4 cu. ft. with Frame
- Stainless Steel Double Door / Drawer Combo
- Stainless Steel Pullout Trash Drawer
- Bottle Opener & Catch
- Umbrella Hole
- GFCI Electric Outlet



Complete Your Backyard with a Matching Fire Feature

Designed to match Best Buy Outdoor Kitchens

FP400

Rectangular Fire Pit

- 60.75" x 36.75" x 22"
- Liquid Propane Gas - 35,000 BTUs
- Porto Ivory Matte Tile
- Dakota Rock Base
- Chestnut Fire Glass
- Stainless Steel Access Door



FP100

Small Square Fire Pit

- 38" x 38" x 22.25"
- Liquid Propane Gas - 35,000 BTUs
- Brava Silver Slate Tile Countertop
- Stucco Rock 16 Base
- Black Fire Glass
- Stainless Steel Access Door



LG800E Elite Pellet Grill



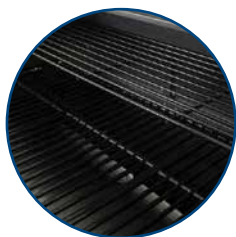
LG860C Estate Cabinet Pellet Grill

Designed with quality and durability in mind, Louisiana Grills offers the most versatile cooking system.



Flavorful Hardwood Pellets

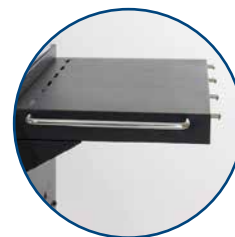




LG800D Elite Pellet Grill

The LG800D provides the same features of the LG800E with additional styling and features giving you an amazing look and food that will make you the envy of the neighborhood.

- Total Cooking Area: 838 sq. inches
- Meat Probe: Full-function programmable meat probe
- Cooking Temp Range: 180° to 600°F
- Standard Flame Broiler: Simple slide-plate for direct and indirect flame grilling
- Main Grid Construction: Porcelain-coated cast iron
- Finish: High-temp powder-coated finish with stainless steel lid, front tray and cabinet doors
- Hopper Capacity: 29 lbs
- Assembled: 70.8"H x 47.6"W x 23.7"D



LG800E Elite Pellet Grill

The LG800E combines the look of a classic gas grill with the versatility of a pellet grill providing you with great grilling and smoking for years to come.

- Total Cooking Area: 838 sq. inches
- Meat Probe: Full-function programmable meat probe
- Cooking Temp Range: 180° to 600°F
- Standard Flame Broiler: Simple slide-plate for direct and indirect flame grilling
- Main Grid Construction: Porcelain-coated cast iron
- Finish: High-temp powder-coated finish with stainless steel lid, front tray and cabinet doors
- Hopper Capacity: 21 lbs.
- Assembled: 56.8" W x 47.6" H x 23.7"D



LG860BI Estate Built-in Pellet Grill

With grilling and smoking the standard in today's BBQ world the LG860BI is the perfect addition to every outdoor kitchen. Take advantage of the latest in BBQ technology with the best built-in pellet grill on the market today.

- Total Cooking Area: 860 sq. inches
- Meat Probe: Full-function programmable meat probe
- Cooking Temp Range: 180° to 600°F
- Standard Flame Broiler: Stainless steel slide-plate for direct and indirect flame grilling.
- Primary Body: Heavy-duty 304 stainless steel double wall construction (for superior heat retention)
- Finish: Heavy duty 304 Stainless steel body
- Large Hidden Hopper: 28 lbs
- Assembled: 43.6"H x 27.4"W x 24.8"D



LG860C Estate Cabinet Pellet Grill

Be the envy of your family and friends with the perfect grill for all occasions whether its burgers for the family or ribs and brisket for your friends. Only a pellet grill combines a great look with the ability to smoke and grill.

- Total Cooking Area: 860 sq. inches
- Meat Probe: Full-function programmable meat probe
- Cooking Temp Range: 180° to 600°F
- Standard Flame Broiler: Stainless steel slide-plate for direct and indirect flame grilling.
- Primary Body: Heavy-duty 304 stainless steel double wall construction (for superior heat retention)
- Caster Style: Four heavy-duty caster wheels
- Large Hidden Hopper: 28lbs
- Side Shelves: Two stainless steel side shelves with BBQ tool hooks
- Assembled: 68.9"H x 49.3"D x 24.8"D



LG800BL | LG1000BL | LG1200BL Black Label Pellet Grill

The new Black Label line of pellet grills set a new standard in the traditional sub thousand dollar barrel design. The three Black Label grills are a great combination styling, features, and function that will provide you years of great family, fun and food.

- Total Cooking Area:
860 sq. inches, 1028 sq. inches, 1180 sq. inches
- Meat probe: Two full-function programmable meat probes
- Cooking temp range: 180°F to 600°F
- Standard flame broiler: External control simple slide-plate for direct and indirect flame grilling
- Primary body: Heavy-duty 14-gauge steel construction
- Hopper capacity: 18 lbs, with rear pellet door to empty
- Hopper site glass: Window for checking fuel level
- Front shelf: Solid steel folding front shelf
- Bottom shelf: Solid steel bottom shelf
- Handle style: Black nickel plated stainless steel handles
- Wheels: Four locking swivel casters

Flavorful Hardwood Pellets

The secret to great flavor with your Louisiana Grill is using quality Louisiana Grills hardwood pellets sourced from the hardwood forests of North America.

- No glues or binders are ever used in the process as the natural lignin found in the hardwood binds the pellets together under heat and pressure.
- All flavor comes from the wood – No artificial scents or sprays are used.
- Available in 40lb bags.
- Competition Blend | Hickory Blend | Apple Blend | Cherry Blend | Whiskey Barrel Blend | Mesquite Blend





Primo Oval JR 200 with compact cypress table



Primo Oval XL 400 with cypress table

The ceramic shell helps food retain its natural moisture, unlike metal grills that pull the moisture out.



Cast Iron Firebox Divider



Primo Oval JR 200

The Primo Oval JR 200 is deceptively large when it comes to cooking ability. Perfect as a primary grill or to complement your current gas grill.

- Grill Weight: 110 lbs.
- Cooking Area: 210 sq in.
- Optional Rack System: 150 sq in.
- Total Cooking Area: 360 sq in.
- Cooking Grid: 13.5" x 18.5"
- Temperature Range: 150°—850°F+
- Fuel Source: Natural Lump Charcoal
- Grill Body: Premium-Grade Ceramic
- Made in USA



Primo Oval LG 300

The Primo Oval LG 300 is perfect for cooking “large” amounts of food. Increase your cooking area with our extended racks.

- Grill Weight: 145 lbs.
- Cooking Area: 300 sq in.
- Optional Rack System: 190 sq in.
- Total Cooking Area: 495 sq in.
- Cooking Grid: 15" x 22"
- Temperature Range: 150°—850°F+
- Fuel Source: Natural Lump Charcoal
- Grill Body: Premium-Grade Ceramic
- Made in USA



Primo Oval XL 400

The Primo Oval XL 400 is our most popular grill and no wonder. It offers the largest cooking area to grill, bake, roast or smoke any food.

- Grill Weight: 200 lbs.
- Cooking Area: 400 sq in.
- Optional Rack System: 280 sq in.
- Total Cooking Area: 680 sq in.
- Cooking Grid: 18.5" x 25"
- Temperature Range: 150°—850°F+
- Fuel Source: Natural Lump Charcoal
- Grill Body: Premium-Grade Ceramic
- Made in USA

Primo Kamado All-In-One grill

The Primo Kamado All-In-One ceramic grill is Primo’s traditional 18.5” round Kamado style ceramic grill. Grill, bake, roast or smoke any food. Indirect cooking for baking, roasting and smoking requires the Heat Deflector Kit. The Primo Kamado All-In-One includes the Ceramic Grill, Cradle Stand with two locking casters, FDA approved food safe Side Tables with utensil pins, Ash Tool, and Grate Lifter.

- Grill Weight: 150 lbs.
- Cooking Area: 280 sq in.
- Cooking Grid: 18.5” dia.
- Temperature Range: 150°—850°F+
- Fuel Source: Natural Lump Charcoal
- Grill Body: Premium-Grade Ceramic
- Grill Cradle: Included with Two Locking Casters
- Ash Tool: Included
- Grate Lifter: Included
- Made in USA





Primo Grill Cart with Stainless Steel Top

Primo's strongest and most durable grill cart. The metal cart base is powder coated for weather resistance and includes a lower basket for storage. The table top is constructed of stainless steel for years of use. Includes two locking casters and two standard casters. Assembly required. Available for Primo Oval XL 400, Oval LG 300 and Oval JR 200.



Primo Grill Cart Base

Primo's strongest and most durable grill cart. The metal cart base is powder coated for weather resistance and includes a lower basket for storage. Includes two locking casters and two standard casters. Assembly required. Available for Primo Oval XL 400, Oval LG 300 and Oval JR 200.



Primo Go



Primo Go Base



Primo Go Base Folded



Countertop Cypress Grill Table

Designed for the outdoor chef who needs more space and who enjoys the beauty of a wood table. Comes unfinished. Ceramic shoes included. Available in specific models for XL 400, LG 300, JR 200.



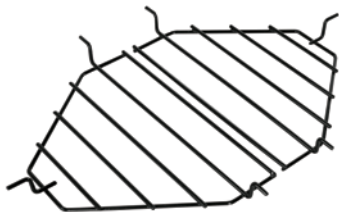
Compact Cypress Grill Table

Designed for limited space on a deck or patio while still offering the beauty of a wood table. Comes unfinished. Ceramic shoes included. Available for XL 400.

Primo GO and Primo GO Base

The Primo GO Base is ready to go with you. Once the Primo GO is detached, the Go Base folds into a compact format for storage or transport in a matter of seconds. Just remove the side support braces, fold it up, and put it in your trunk or behind your truck seat.

Accessories



Primo Heat Deflector Racks



Primo Heat Deflector Plates



Primo Heat Deflector Plates with Racks



Ceramic Heat Deflector (Kamado)



Baking / Pizza Stone (unglazed)



Baking / Pizza Stone (glazed)



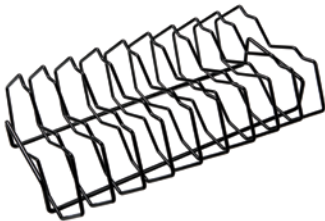
Cast Iron Firebox Divider



Cast Iron Cooking Grate



Cast Iron Griddle



Rib Rack



“V” Rack



100% Natural Lump Charcoal

Please Note: Images shown are representations of the actual product and are for identification purposes only. Because colors vary, there is no guarantee that the actual color will be an exact match to the image shown. Always check a sample of the actual product prior to purchase and installation. www.nptpool.com



Fireplaces & Fire Pits



Fire Places | Fire Pits | Brick Ovens

Fireplaces

Bordeaux Series | Belgard®



Bordeaux Series

A timeless stackstone design that allows the fireplace, the grill island, or the brick oven to become the focal point of your outdoor space.



Fireplace

2'7"D x 4'3"W x 7'8"H



Wood Boxes

2'1 1/4"D x 3'3"W x 3'1"H



Brick Oven

3'6 1/2"D x 4'5 1/4"W x 7'8"H
Special Order



Grill Island

2'6"D x 5'11"W x 3'5"H



Bristol Series

A beautiful combination of tumbled block with Arbel and Urbana accents. Bristol's rustic look blends well with virtually any landscape.



Fireplace

3'D x 5'W x 9'3"H



Wood Boxes

2'4"D x 3'W x 3'3"H



Brick Oven

4'D x 4'W x 8'5"H
Special Order



Grill Island

3'D x 6'4"W x 4'4"H
Special Order

Fireplaces

Brighton Series | Belgard®



Brighton Series

This is the most economical fireplace set. Featuring the same 36" firebox as the Bristol Series, plus a built in hearth. Brighton is a beautiful option for those on a budget.



Fireplace

3'4" D x 4'4" W x 8'4" H



Wood Boxes

2'4" D x 2'8" W x 2'11" H per box



Weston Stone Fire Pit Kit

Belgard's Weston Stone Fire Pit kit installs quickly and offers the clean and contemporary look of tumbled Stone.

The kit is available in a round or square units and can be ordered with grates and inserts.

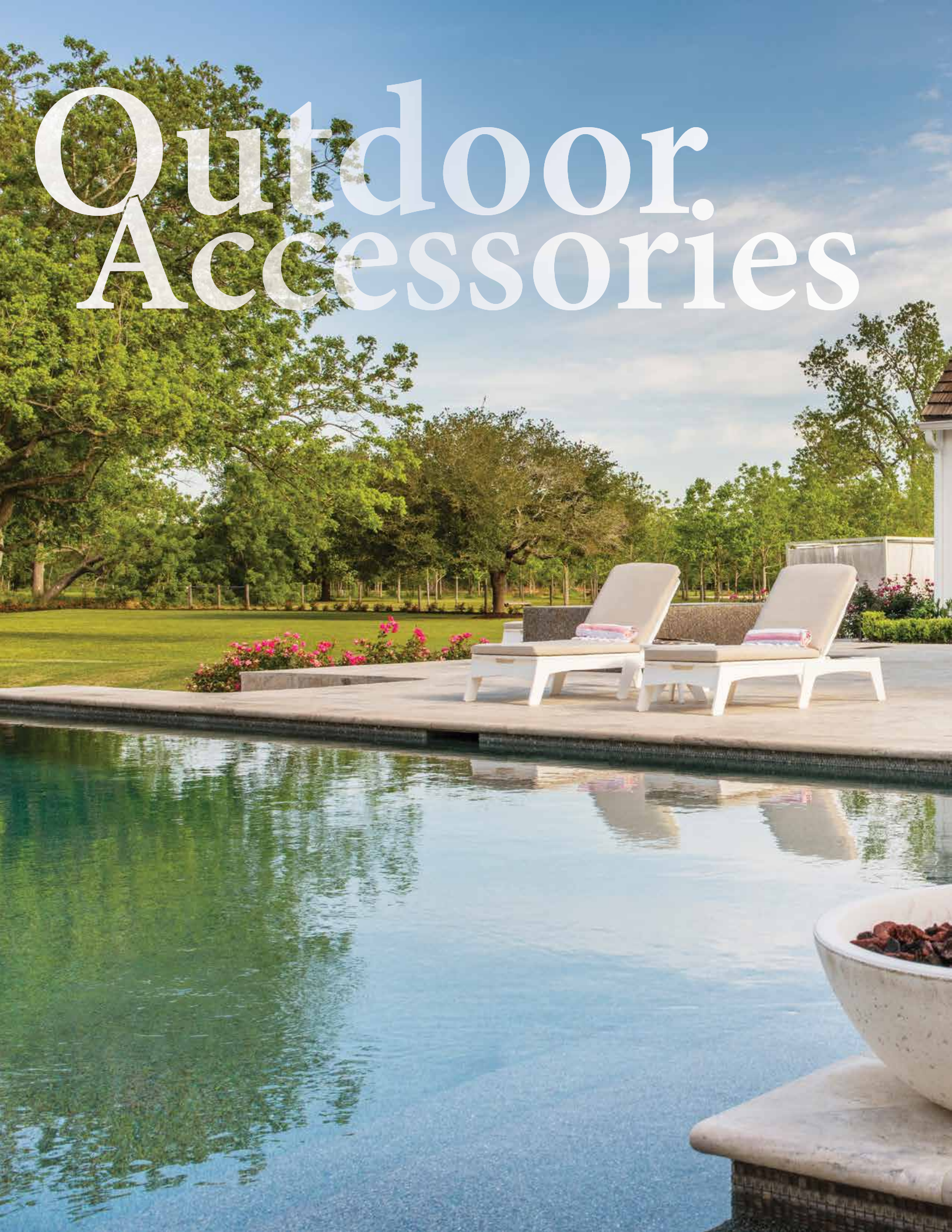


Chicago Brick Oven

Inspired by traditional oven designs first used over four thousand years ago. We offer the Neapolitan dome design. This oven design created a unique FlameRoll, which generates high, even temperatures for balanced cooking and genuine wood fired taste.

Available in the Bordeaux and Brighton Series or as independent oven units.





Outdoor. Accessories



Synthetic Turf | Outdoor Speakers, Heaters and Furniture



Kennel Turf / Pet Turf

TurfGro Kennel Turf is 1.125" tall with three times as many drain holes for increased cleaning and rinsing. This product has both emerald and olive green face fibers with green and tan thatch.

Applications - pet areas, fringe around putting greens, general landscape, and playgrounds.



Putt 44

TurfGro Putt 44 is 5/8" tall, and is a densely constructed product perfect for putting greens and court sports. Putt 44 is two tone green.

Application - putting greens, bocce courts, court sports and batting cages.



S 90

S 90 is an all purpose turf that is 1.75" tall. The "S" shaped blade makes it softer yet durable for most applications. S 90 has face fibers that are olive and emerald green with green and tan thatch.

Application - general landscape, playgrounds, pool decks, courtyards and roof decks.



S 50

S 50 is an all purpose turf that is 1 5/8" tall. The "S" shaped blade makes it softer yet durable for most applications. S 50 has face fibers that are olive and emerald green with green and tan thatch.

Application - general landscape, playgrounds, pool decks, courtyards and roof decks.



2 Tone 50

2 Tone 50 is 1.625" tall. The 2 Tone 50 is an entry level product, great value product and great for general purpose landscape applications.

Application - general landscape, playgrounds, pool decks, courtyards and roof decks.



2 Tone 84

2 Tone 84 is 1.75" tall. The 2 Tone 84 is a high end product perfect for plush areas with little or no maintenance.

Application - general landscape, playgrounds, pool decks, courtyards and roof decks.



Ultra Real 60

Ultra Real 60 is 1.75" tall. This product boasts four colors of face fibers, olive/field/emerald/blonde, with tan and green thatch. The four face fibers are two different shapes as well, making this product 6 colors and 3 different fibers. It is this variation that makes the Ultra Real look and feel just that, Ultra Real.

Application - general landscape, playgrounds, pool decks, courtyards and roof decks.



Ultra Real 80

Ultra Real 80 is 2" tall. This product boasts four colors of face fibers, olive/field/emerald/blonde, with tan and green thatch. The four face fibers are two different shapes as well, making this product 6 colors and 3 different fibers. It is this variation that makes the Ultra Real look and feel just that, Ultra Real.

Application - general landscape, playgrounds, pool decks, courtyards and roof decks.



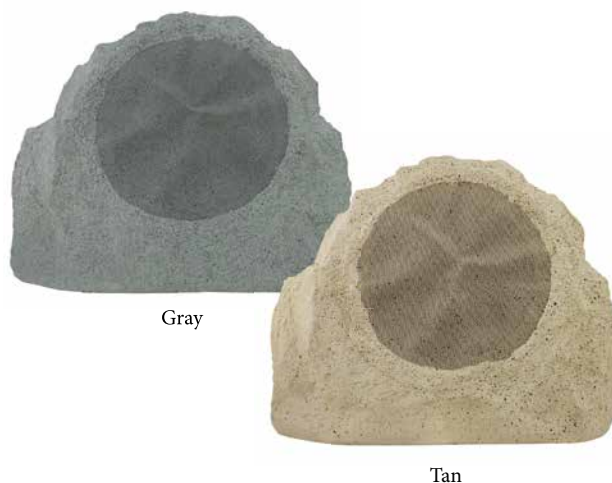
Bring a new dimension to outdoor audio with sound systems that blend into any landscape, while providing rich sound.





Acoustiscape™ Series

Bring a new dimension to outdoor audio. Available in 4.5", 6" and 8" versions, the Acoustiscape is designed to not only blend into any landscape, but provide rich sound with amazing amounts of volume. Flexible mounting options, robust design, and weatherproof quality make the Acoustiscape perfect for any outdoor installation.



RK Series

Available in two different colors, TruAudio rock speakers are offered in a 8", dual voice coil or subwoofer configuration. They complement any outdoor space allowing the audio enthusiast to experience sound in a natural setting.



Hardscape Sub

Perfect option to add the deeper, rich, low end bass to your outdoor entertainment area. Designed to withstand exterior elements. Its compact and versatile form allows you to place it in cabinets, patio areas, or hidden in your yard's landscape.



VSSL A.1

VSSL amplifiers have made it easier than ever to stream your music to any zone, from any device using Airplay2, Siri, Chromecast Built-in, the Google Assistant, Spotify Connect, or Bluetooth. No third-party apps needed. VSSL's cutting-edge technology delivers all of your music to your fingertips, no clumsy remotes, or keypads.



Bring indoor
comfort to an
outdoor living
space and extend
your patio season
all year long.





SL-Series slimline single element heaters

With crisp, modern styling, an anodized aluminum housing and narrow profiles, Slimline heaters virtually disappear into the surrounding décor.

- 1,600 - 4,000 watt capacities
- Three ultra durable anodized aluminum housing colors
- 90% efficient with high output safety grid
- 29.5" - 63.5" length options to fit any installation
- 3-year warranty.
- Made in the USA



C-Series single element heaters

Our new C-Series heaters are developed for use in high visual impact locations where their sleek design blends seamlessly.

- 1,500 - 4,000 watt capacities
- Eight standard colors with unlimited custom colors
- 90% efficient with high output safety grid
- 33"-61.25" length options to fit any installation
- 3-year warranty
- Made in the USA

C-Series features include minimal clearance requirements, recessed mounting options, inset brackets that create a "floating" effect, and mounting heights between 7-11 feet.



WD-Series dual element heaters

High-powered, dual-element WD-Series fixtures provide more concentrated heat for large scale coverage needs.

- 3,000 - 6,000 watt capacities
- Eight standard colors with unlimited custom colors
- 90% efficient with high output safety grid
- 33"-61.25" length options to fit any installation
- 3-year warranty.
- Made in the USA

WD-Series features include minimal clearance requirements, recessed mounting options, short standoffs and mounting heights between 8-14 feet.

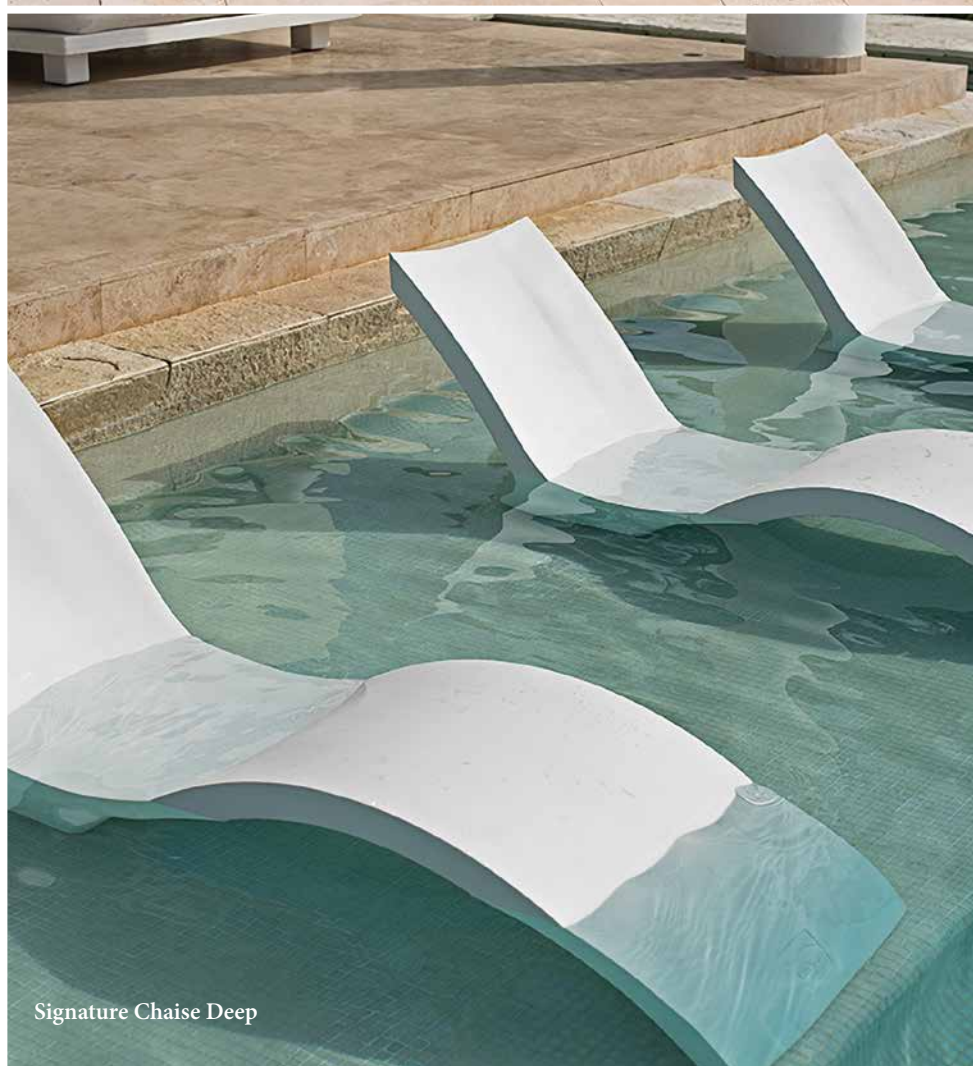


Signature Chaise,
Headrest Pillow
and 14" Side Table



Mainstay Chaise with Cushion

Ledge Lounger
furniture is crafted
with UV resistant
materials to stand
the test of time,
in any weather.



Signature Chaise Deep



Signature Chaise / Chaise Deep

The Signature Chaise provides a stylish, contoured place to relax on your tanning ledge. The Chaise is designed for shallow areas with water depths of 0-9 inches. The Chaise Deep for areas with water depths of 10-15 inches.



Signature Chair / Low Back Chair

With superb lumbar and back support, you can sit up and enjoy the view, a book, or a cold beverage. Designed for use on a ledge with water depths up to 9 inches, and also works great on the deck or in the sand.



Signature Barstool

The Signature Barstool is contoured for comfort with lower back support, easily adjusts to various floor angles and is suitable for deck and patio use. The stool's self-sinking technology allows for effortless installation by simply tossing it into the water and watching it settle onto your pool floor in just minutes.



Affinity Square Sunbed

The Affinity Sunbed is perfect for poolside relaxing with friends. The Sunbed consists of a square base and a flat cushion. Designed for any outdoor space and also works in up to 10 inches of water for in-pool use. Customize with hundreds of color combinations, embroidery, and throw pillows for additional style.



Signature Headrest Pillow

Built-in pocket



Signature Chaise Shade

Media viewing window



Signature Side Table

14"



Signature Side Table

22"



Signature Slide

Slip resistant steps



Mainstay Adirondack / Adirondack Rocker

Low maintenance and long lasting, our Adirondack and Adirondack Rocker enhances your outdoor scene with a unique and stylish versatility. The Adirondack and Adirondack Rocker features a sleek, seamless exterior and a smooth finish.



Mainstay Dining Table

The Mainstay Dining Table enhances your outdoor experience with a stylish space for outdoor dining and gathering. The Dining Table is low maintenance, long lasting, and features a smooth finish. Choose from multiple size options for the Table that best fits your space.



Mainstay Chaise with Cushion

The Mainstay Chaise featuring 5 reclining positions customizable to your comfort, you can lay out flat or sit upright. Low maintenance and long lasting, the Chaise features a sleek, seamless exterior and a smooth finish. The Mainstay Chaise Cushion upgrades your Chaise with full-body comfort and style.



Mainstay Sectional

The Mainstay Sectional is modular, unique, and completely customizable. Designed exclusively for on-deck use, and featuring high quality materials such as high density resin and Sunbrella fabrics. Customize with hundreds of stylish color combinations, and create endless configurations.



Essential Umbrella

Our pulley & pin operated Essential Umbrella, ideal for in-pool or on deck use, features an 1.5" aluminum center pole. High quality materials, such as fiberglass ribs, a single sewn in vent, and Sunbrella fabrics make our Select Umbrella resistant to wind, corrosion, rust, and warping. Customize the canopy and pole to the style of your pool. The Select can be paired with an umbrella base, or used freestanding in an umbrella sleeve.

Canopy Options:

6.5'

7.5'

7.5'

9'

11'



Games Cornhole

Cornhole comes complete with 2 boards and 2 sets of 4 bean bags so you can start playing as soon as it arrives. Choose from 10 board colors, 20 bean bag colors or add customized engraving to create the perfect aesthetic for your yard.



Games Ping Pong

The Ping Pong Table is made with our trademark high-quality construction and durability, the Ping Pong Table can endure even the toughest competition. The Ping Pong Table comes with 2 paddles and 4 ping pong balls. Mix and match colors of the table, net and paddles to create the perfect aesthetic for your yard.



Destination Lounger™ | 16" Table

The Destination Series features table and seating options designed to create spaces for conversation and relaxation.



Destination Lounger™

Starry Night



Seashell

Destination Lounger™

The Destination Lounger™ lets you relax and enjoy the pool without a splash. Elegant design and sturdy construction combine to give pool owners the opportunity to upgrade their sun shelf space with ease.

- Perfect for residential or commercial use
- For use on a pool ledge with water depths up to 12 inches
- High-quality RTM composite material
- UV protection to resist fading
- Compatible with all pool types, including vinyl
- Exclusive colors and visual textures
- Easy to drain and remove when not in use
- Patent pending
- Made in the USA

9

Color/Visual Texture
Options Available



30" Pool or Spa Table
with Cup Holders and
Umbrella Support

30" Pool or Spa Table
and Umbrella Support



16" Table with
Umbrella Support

16" Pool Seat



Destination Tables & Seating

The Destination Series from S.R.Smith features swimming pool table and seating options designed to create spaces for conversation and relaxation. Made in the USA using advanced manufacturing technology, Destination Series products are lightweight and super strong. 16" & 30" round In-Pool Tables

- 30" Round In-Pool Table option with cup holders
- In-Pool Tables with integrated umbrella support feature
- 16" Round Seats
- In-Pool Tables and Seats anchor in 6" Anchors
- Adapter Kits available to allow tables to fit most umbrella anchors on sun shelves
- Perfect for gunite and vinyl pools
- Products are easily removable without tools
- Salt pool friendly
- Made in the USA

9

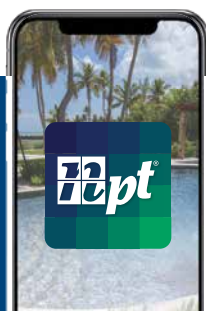
Color/Visual Texture
Options Available

Inspiration...

that goes way beyond the water's edge!



Check out the latest NPT products in our Tile, Hardscapes, and Pool Finish catalogs!
View them online or request your own, free copy delivered right to your doorstep.



Design or remodel your dream pool in seconds!
Download the NPT Backyard App today. | Visit nptbackyard.com



nptpool.com



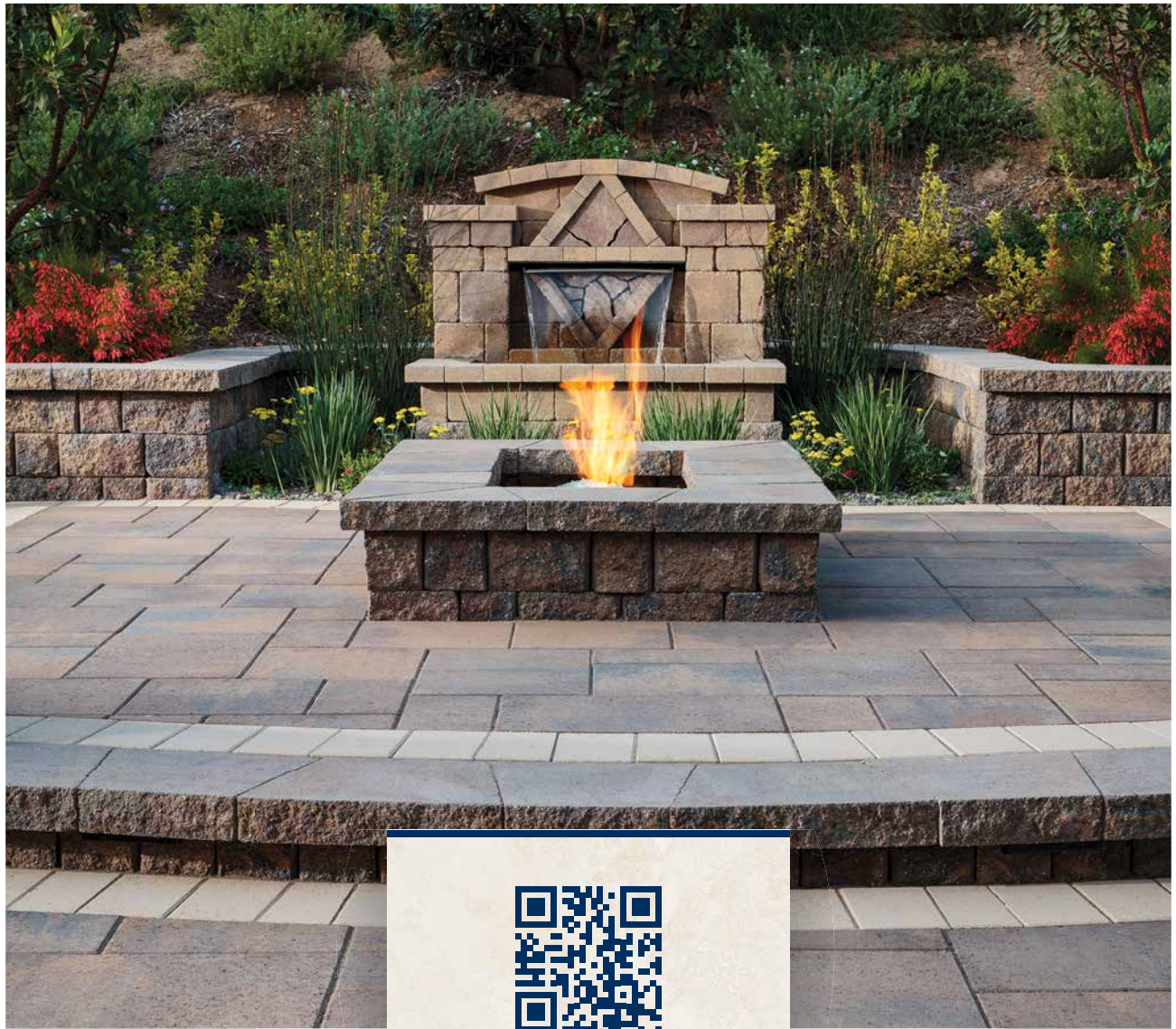
Design or remodel
your dream pool in seconds!



Download the NPT Backyard App today.

nptbackyard.com

Where Outdoor Living Comes to Life®



Scan this QR code to visit
ntpools.com.



Your dealer/builder/contractor is an independent business person and not an agent of National Pool Tile, SCP Distributors LLC, Superior Pool Products LLC or any of their parents, subsidiaries, or affiliates (collectively referred to as "NPT/SCP/SPP"). NPT/SCP/SPP does not accept any responsibility for any representations, statements or contracts made by any Dealer/Builder/Contractor. Color samples shown are representations of the actual product and are for identification purposes only. Because colors may vary, there is no guarantee that the actual color will be an exact match to the image shown. Always check products for proper color and size prior to installation. Use constitutes acceptance. Warranty claims cannot be considered once products are used or installed. Manufacturers reserve the right to change product selections and/or make product modifications. All products may not be available in all areas.

© 2020 Alliance Trading, Inc. | All rights reserved. | NPT-88-2005